

Chignik Conservation Planning



Community Members from
Chignik, Chignik Lagoon,
Chignik Lake, Perryville and
Ivanoff Bay

Sue Flensburg
Dillingham

Tim Troll
Bristol Bay Heritage Land Trust

Marcus Geist
Geographer
Artesian Knowledge

June 4, 2023

Village Mapping

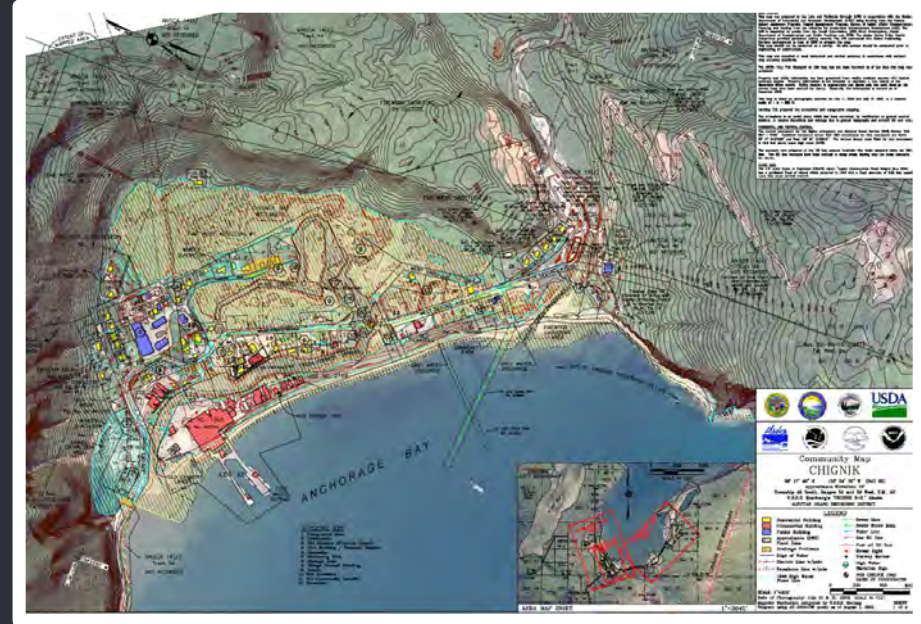
- Community Profile (DCRA)
 - large scale, but small area



wide

gap

- USGS / ADNR
 - large area, but small scale



Conservation Planning Goals

- Practical
- Locally Accepted
- Data Driven

Conservation Scoring Formula

**Cultural
Resources**



**Physical
Features**



**Biological
Resources**

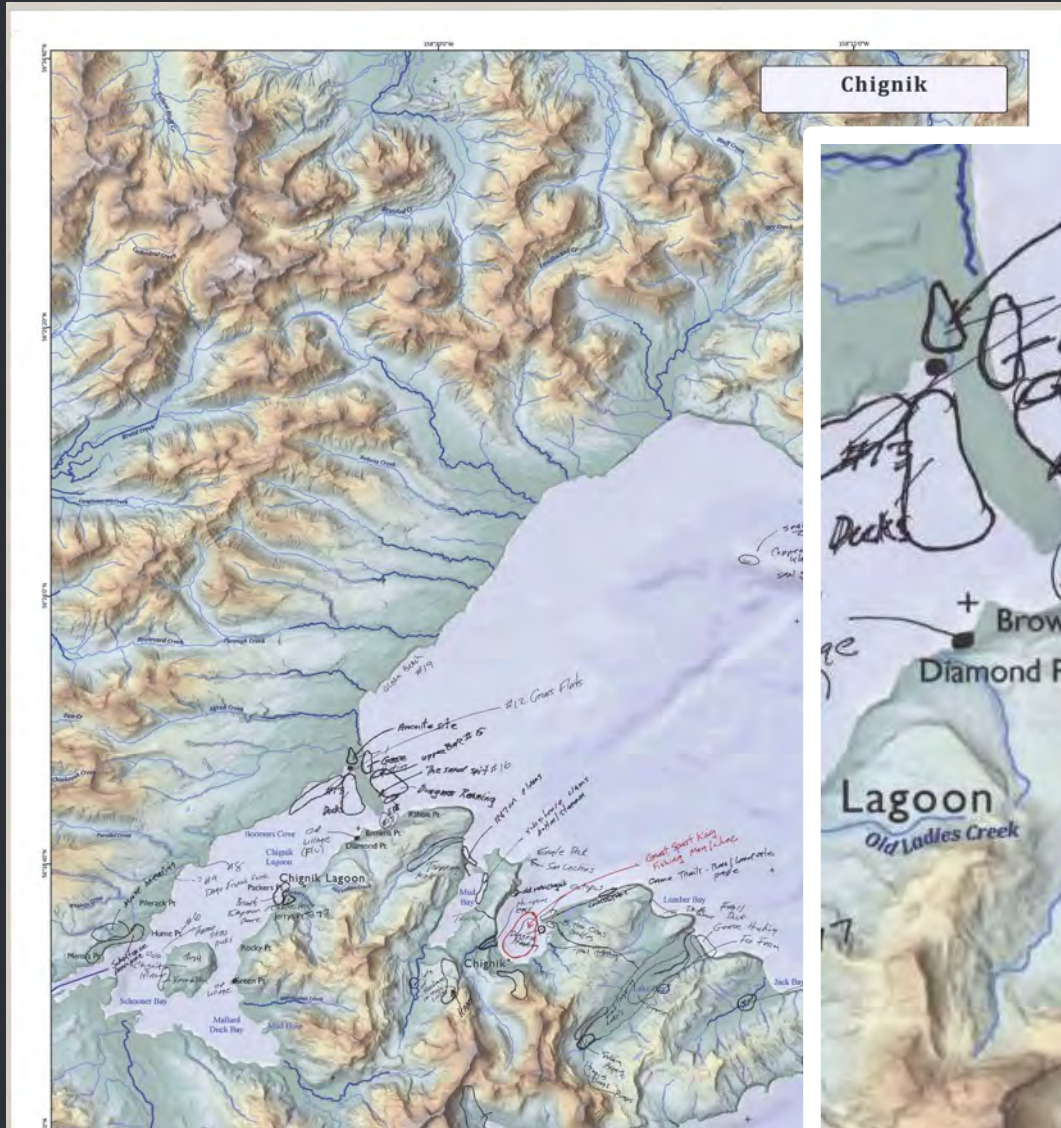


**Land
Management**



Scored Sections
Very High Medium
High Low

Knowledge Sharing

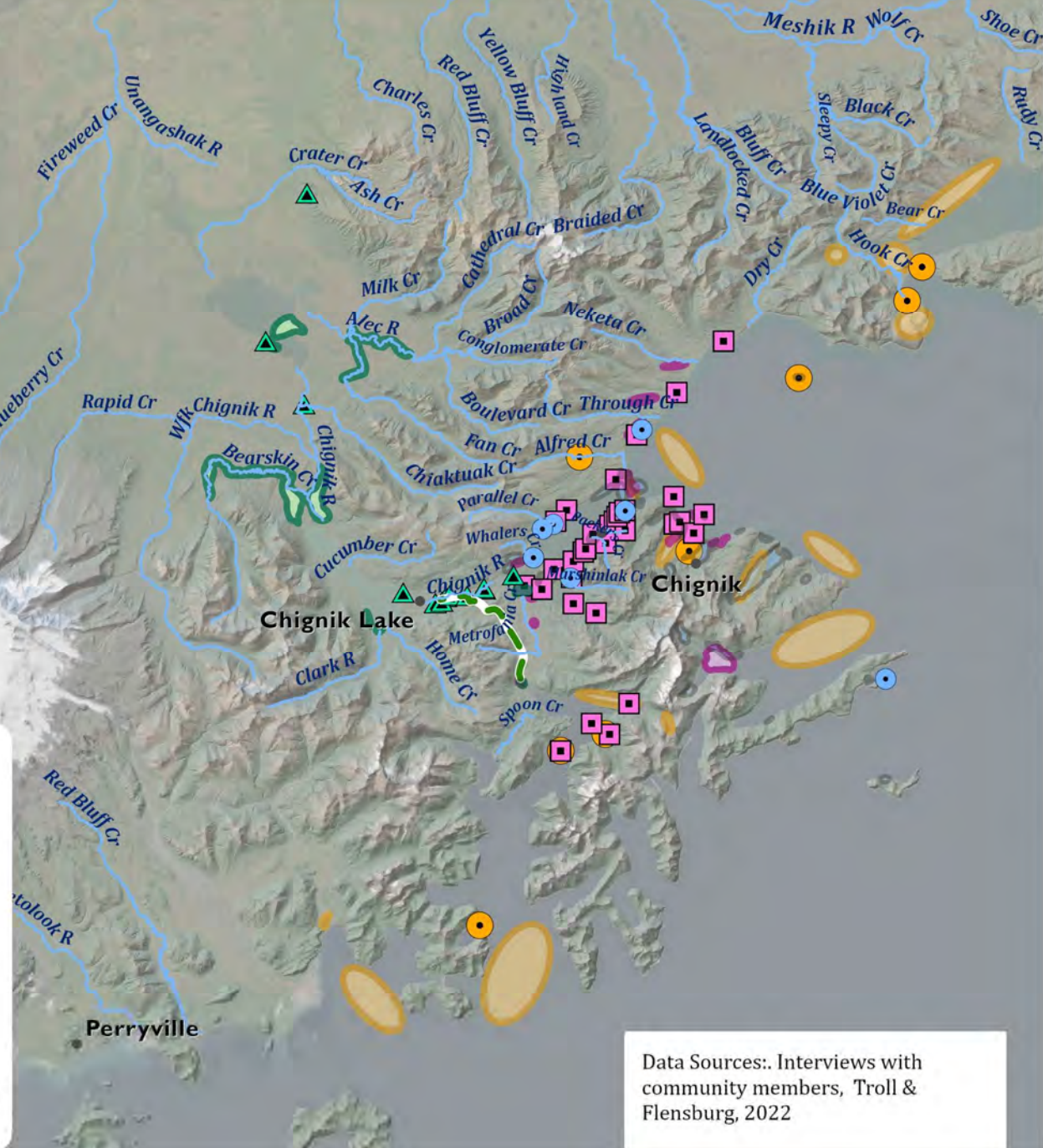


Traditional Locations

Cultural Resources

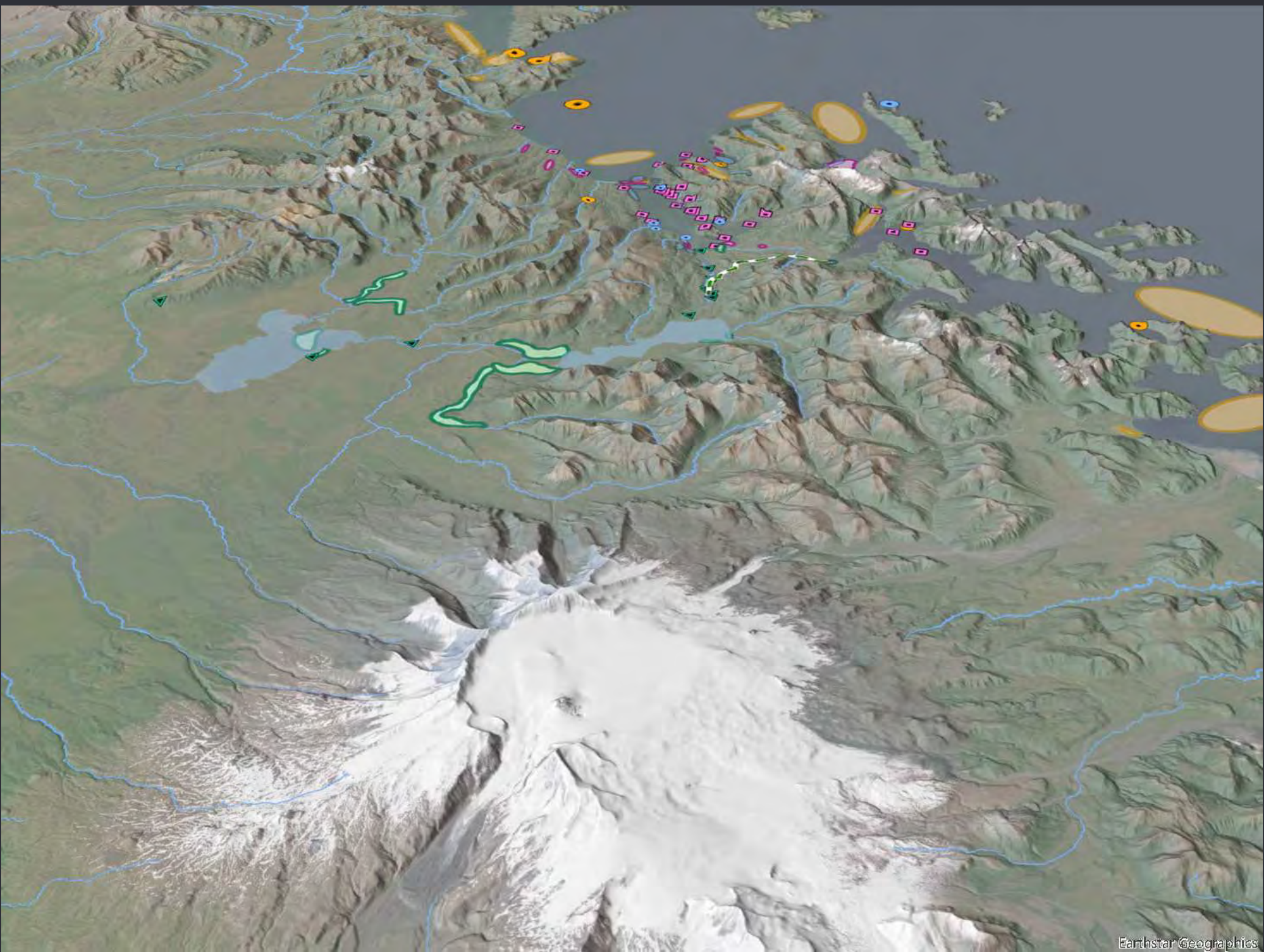
Traditional Locations

- Chignik Bay points
- Chignik Bay places
- Chignik Lake routes
- ▲ Chignik Lake - points
- Chignik Lake - places
- Chignik Lagoon - points
- Chignik Lagoon Places
- Locations identified on 5 vilage overview map
- Places identified on 5 Villages map

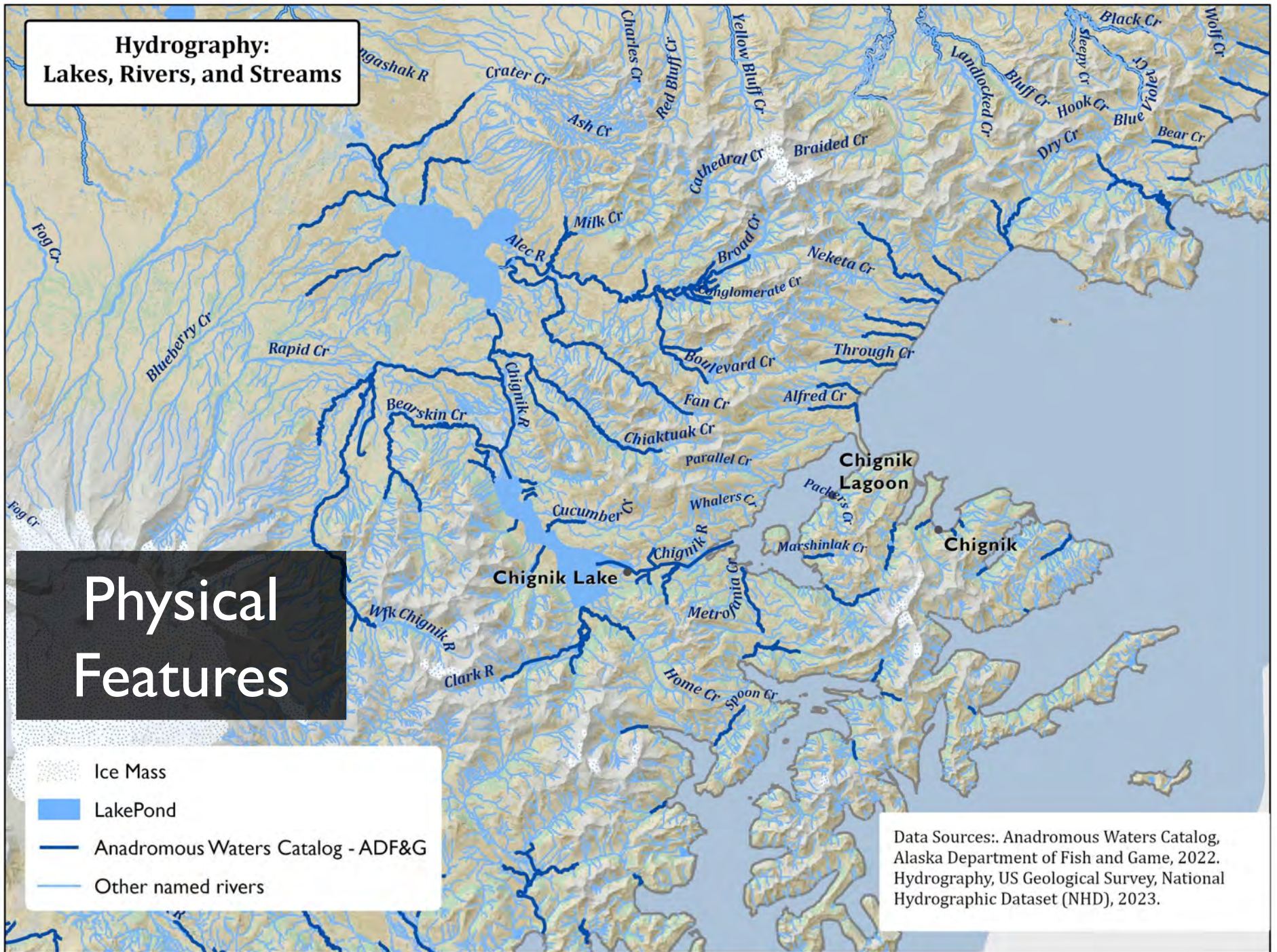


Data Sources: Interviews with community members, Troll & Flensburg, 2022





Hydrography: Lakes, Rivers, and Streams

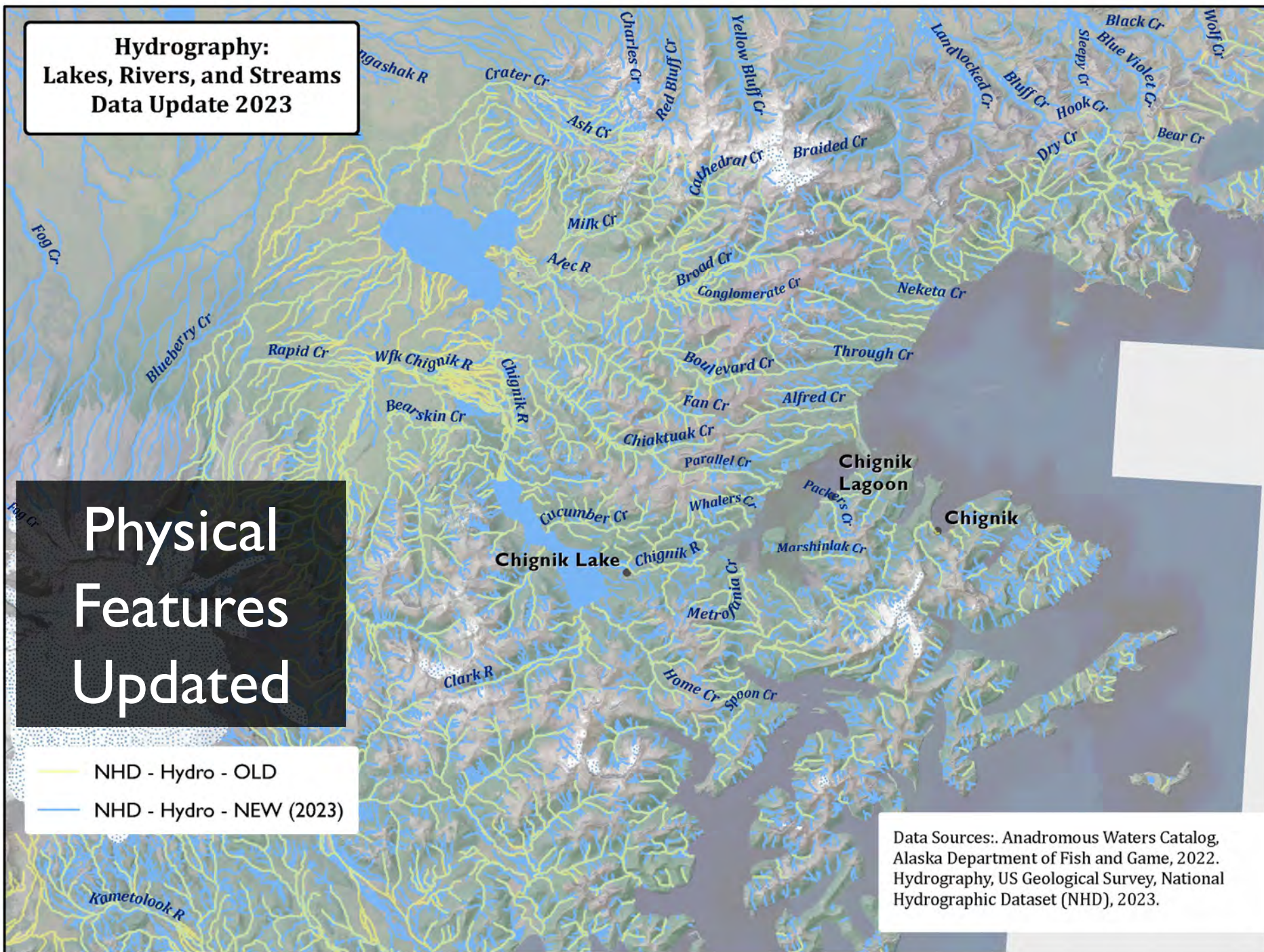


**Hydrography:
Lakes, Rivers, and Streams
Data Update 2023**

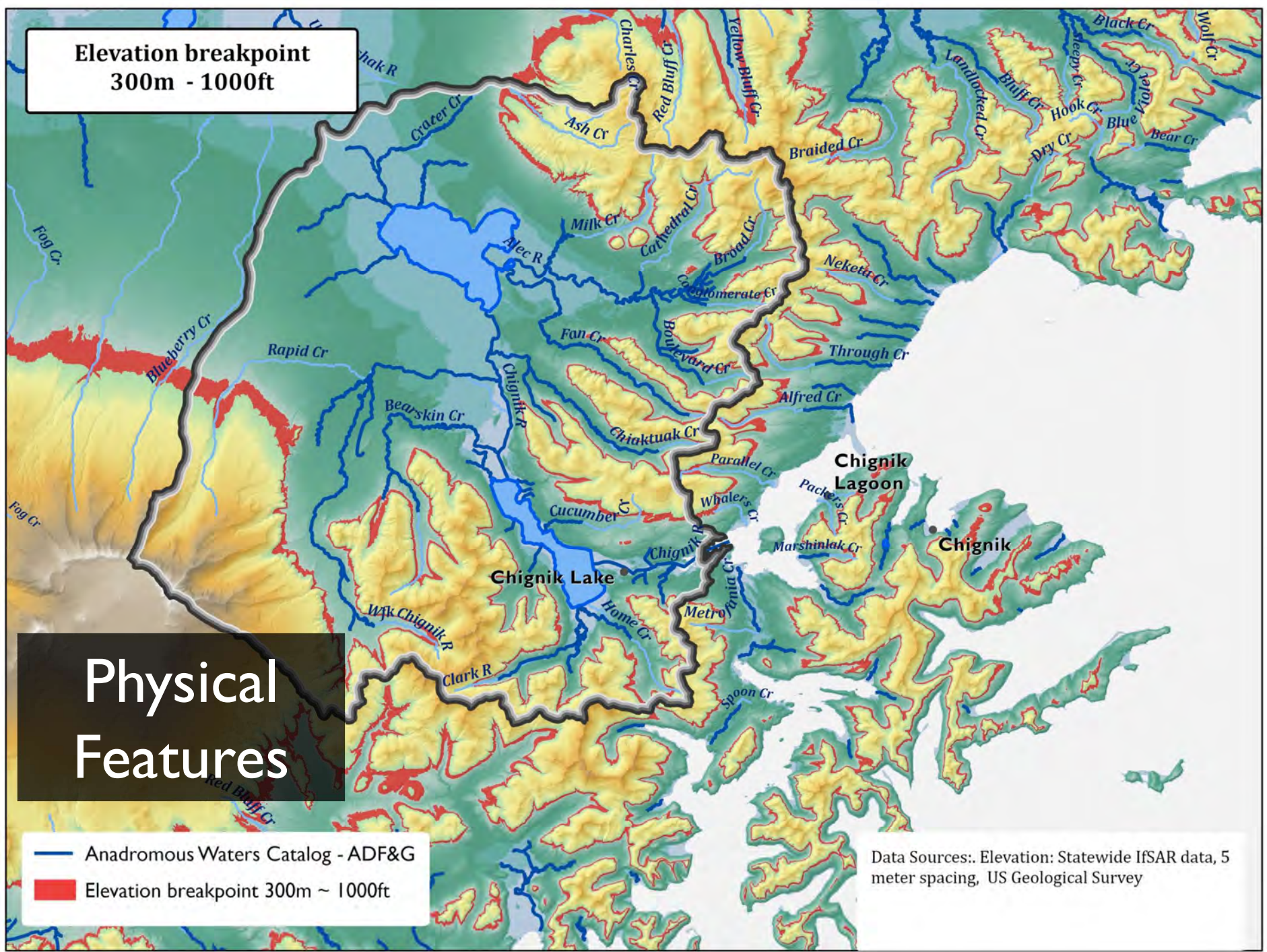
**Physical
Features
Updated**

- NHD - Hydro - OLD
- NHD - Hydro - NEW (2023)

Data Sources: Anadromous Waters Catalog, Alaska Department of Fish and Game, 2022. Hydrography, US Geological Survey, National Hydrographic Dataset (NHD), 2023.



Elevation breakpoint
300m - 1000ft



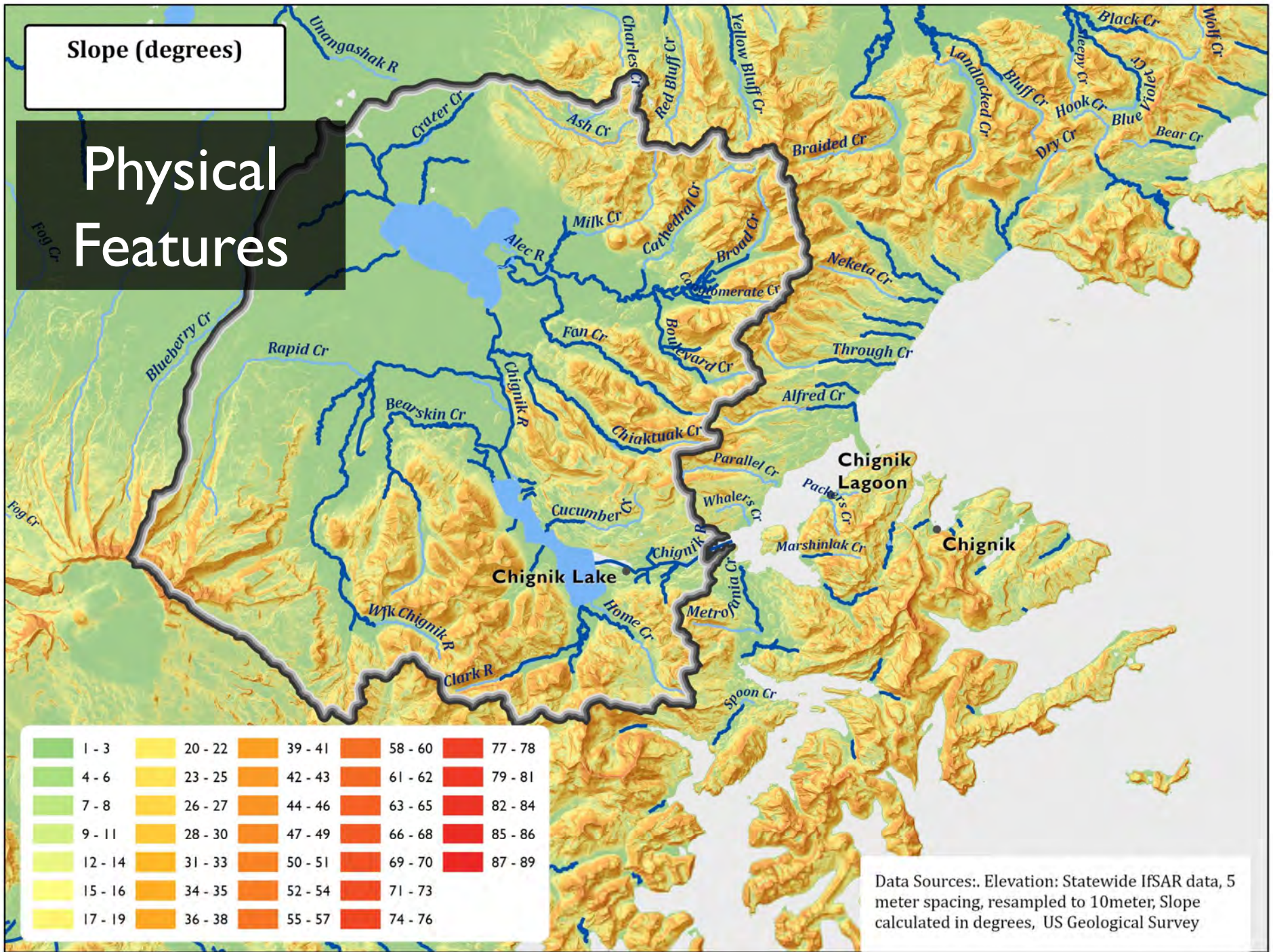
Physical Features

- Anadromous Waters Catalog - ADF&G
- Elevation breakpoint 300m ~ 1000ft

Data Sources: Elevation: Statewide IfSAR data, 5 meter spacing, US Geological Survey

Slope (degrees)

Physical Features

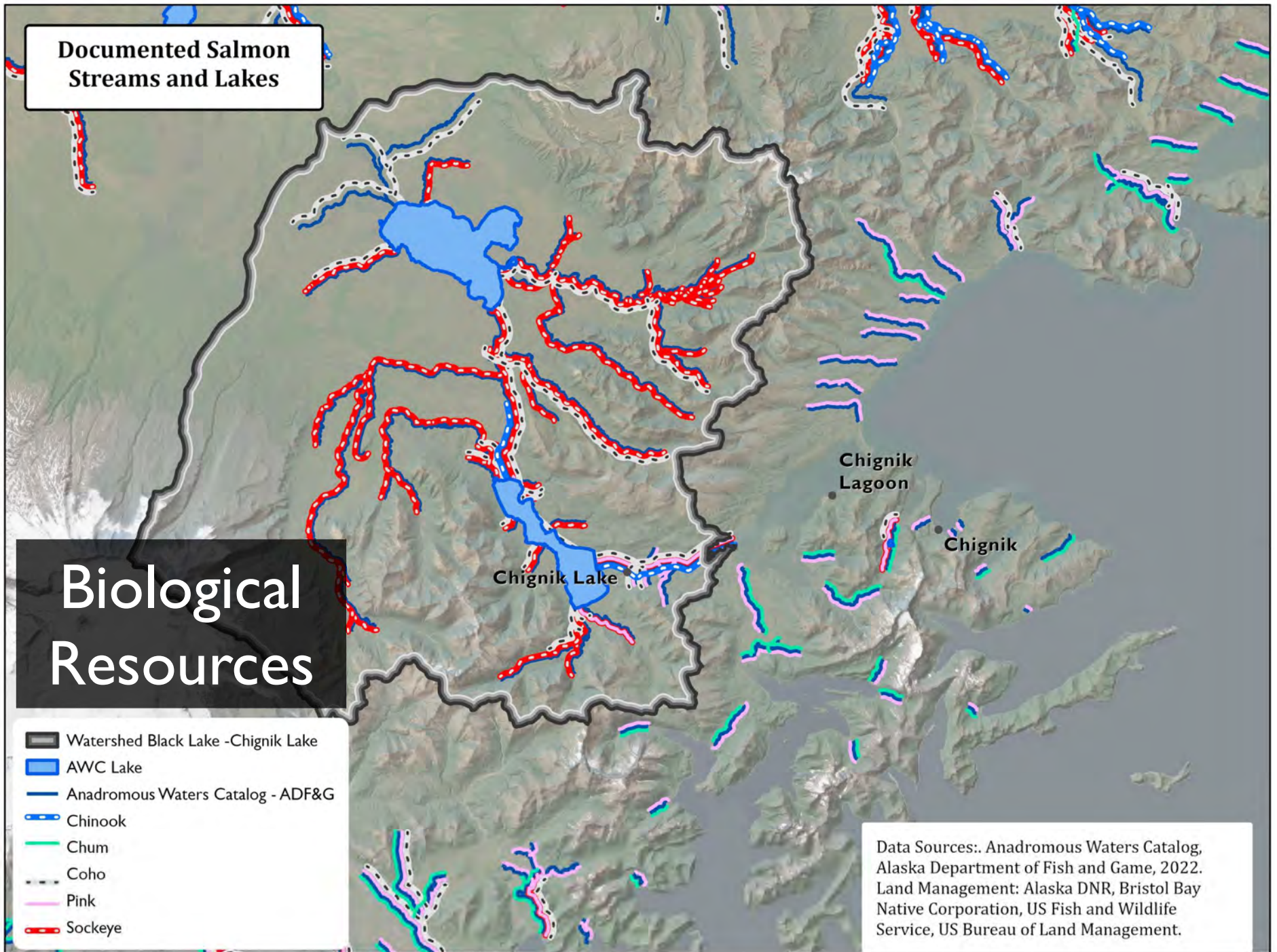


Documented Salmon Streams and Lakes

Biological Resources

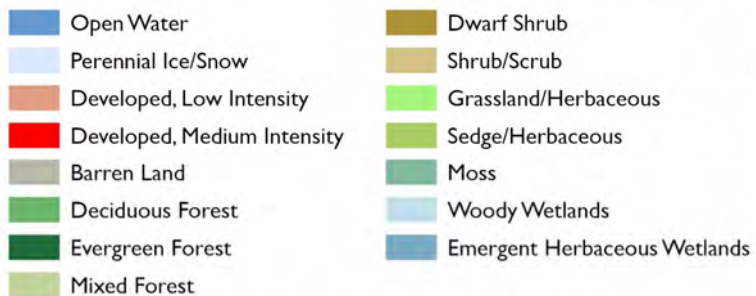
- Watershed Black Lake -Chignik Lake
- AWC Lake
- Anadromous Waters Catalog - ADF&G
- Chinook
- Chum
- Coho
- Pink
- Sockeye

Data Sources: Anadromous Waters Catalog, Alaska Department of Fish and Game, 2022. Land Management: Alaska DNR, Bristol Bay Native Corporation, US Fish and Wildlife Service, US Bureau of Land Management.



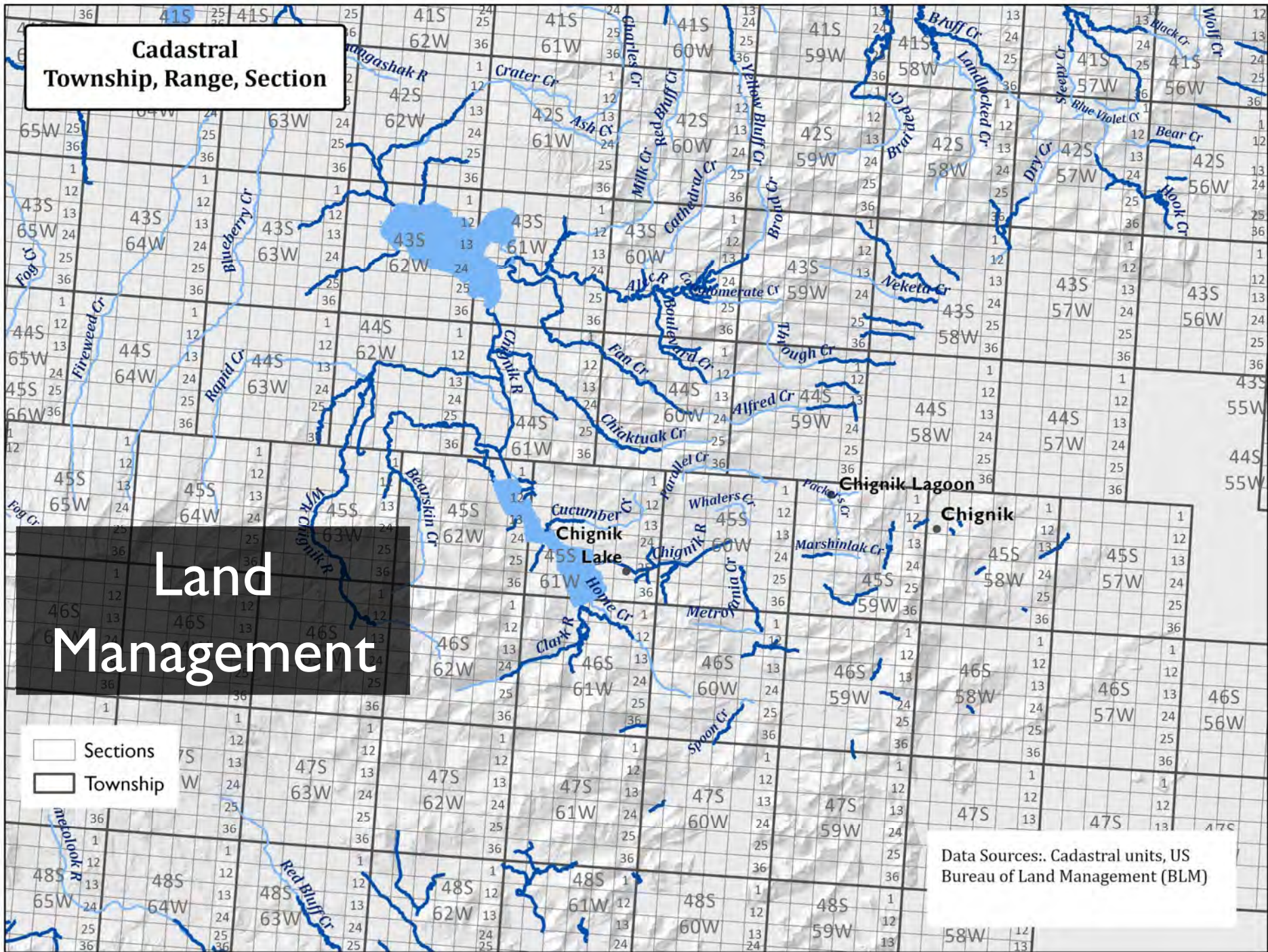
Land Cover

Biological Resources



Data Sources: National Land Cover Dataset, NLCD, interpreted from 30 meter satellite imagery, 2016. US Geological Survey.

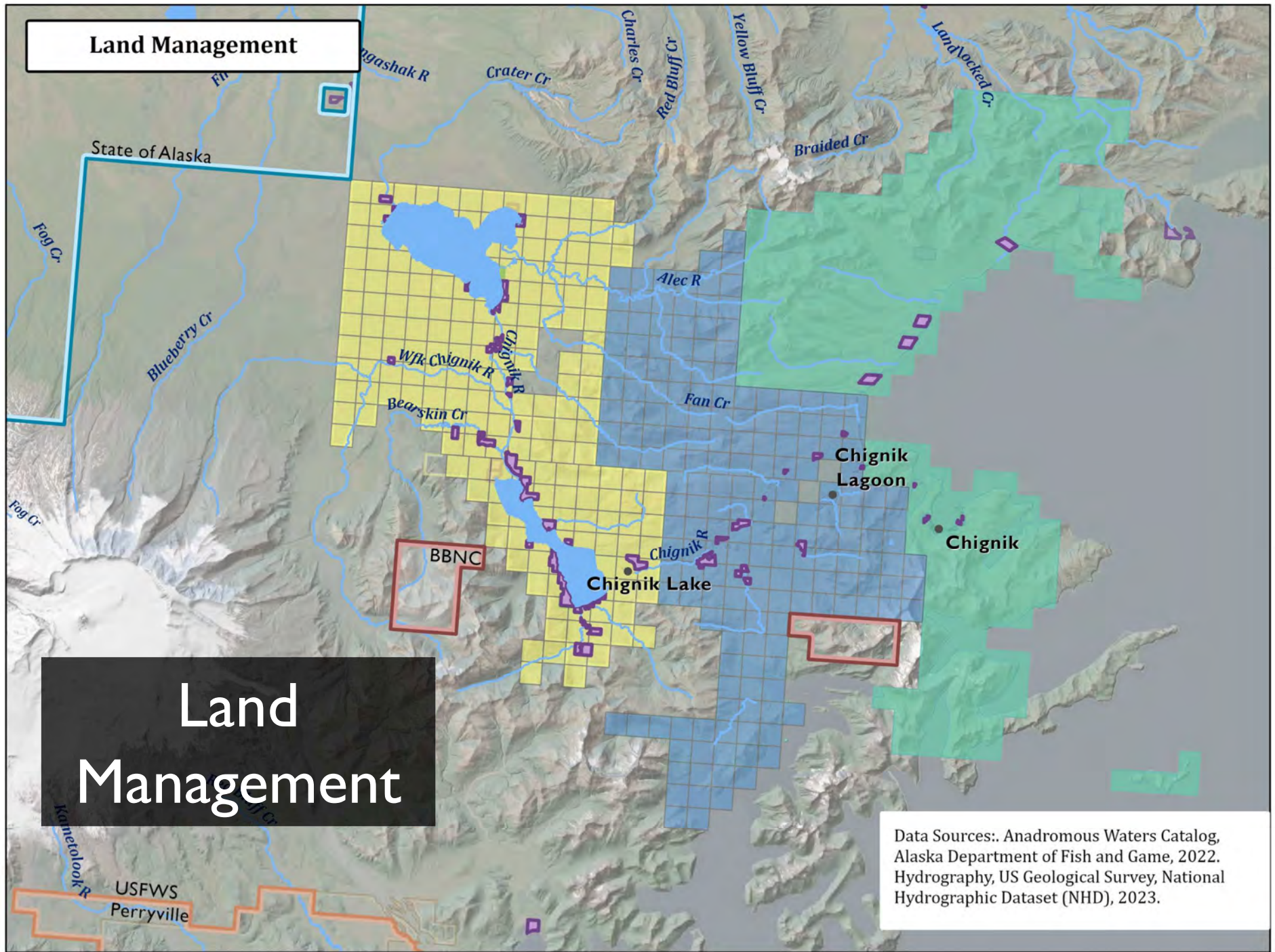
**Cadastral
Township, Range, Section**



**Land
Management**

- Sections
- Township

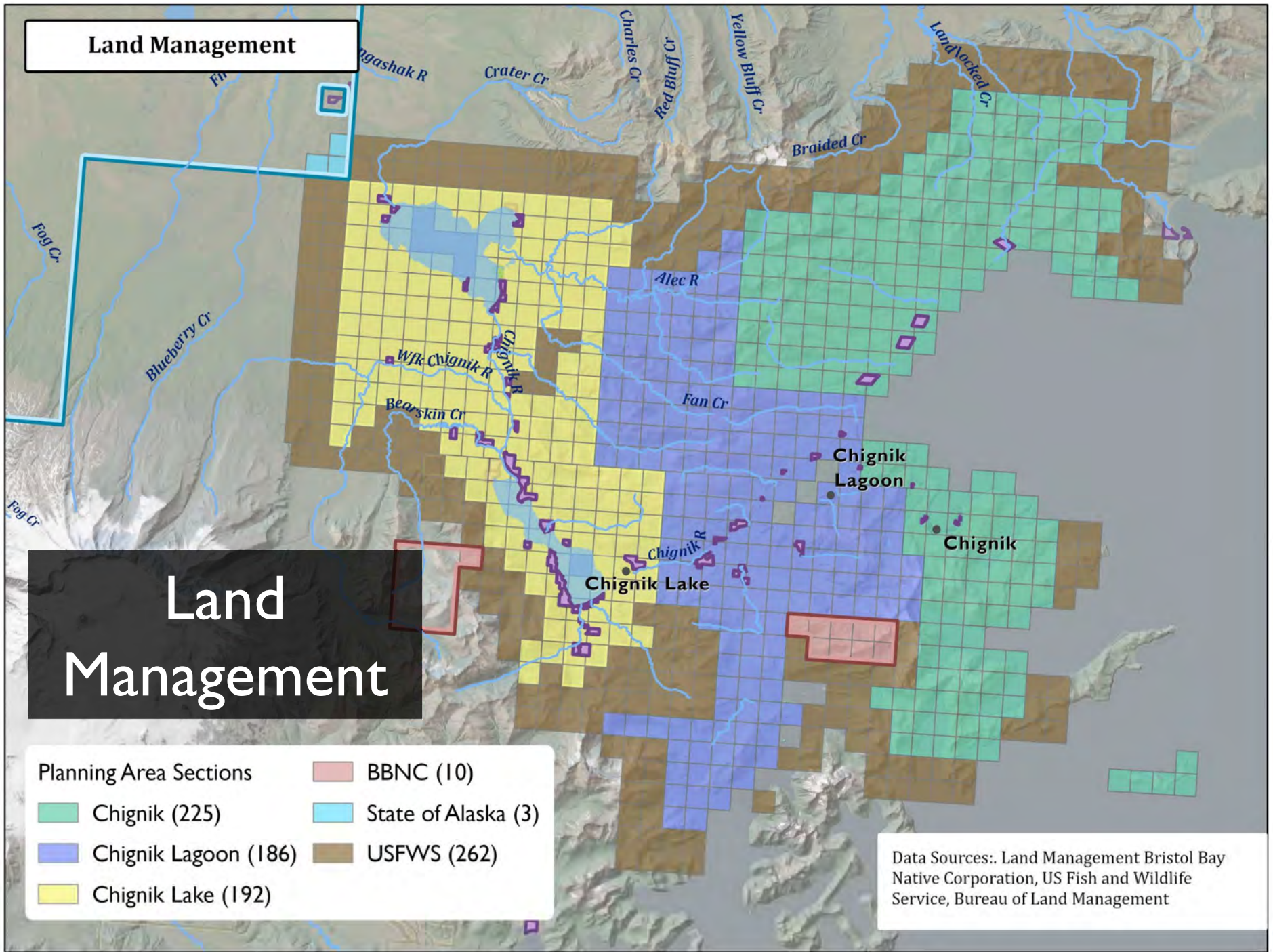
Data Sources: Cadastral units, US Bureau of Land Management (BLM)



Land Management

Data Sources: Anadromous Waters Catalog, Alaska Department of Fish and Game, 2022. Hydrography, US Geological Survey, National Hydrographic Dataset (NHD), 2023.

Land Management



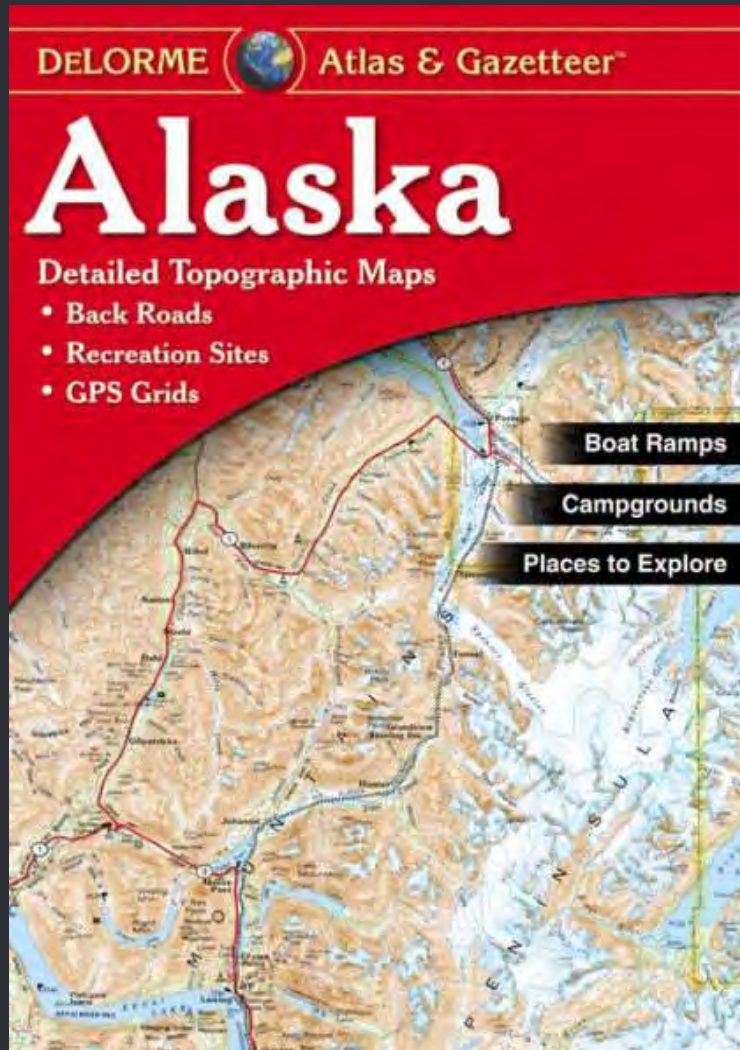
Planning Area Sections	
Chignik (225)	BBNC (10)
Chignik Lagoon (186)	State of Alaska (3)
Chignik Lake (192)	USFWS (262)

Data Sources: Land Management Bristol Bay Native Corporation, US Fish and Wildlife Service, Bureau of Land Management

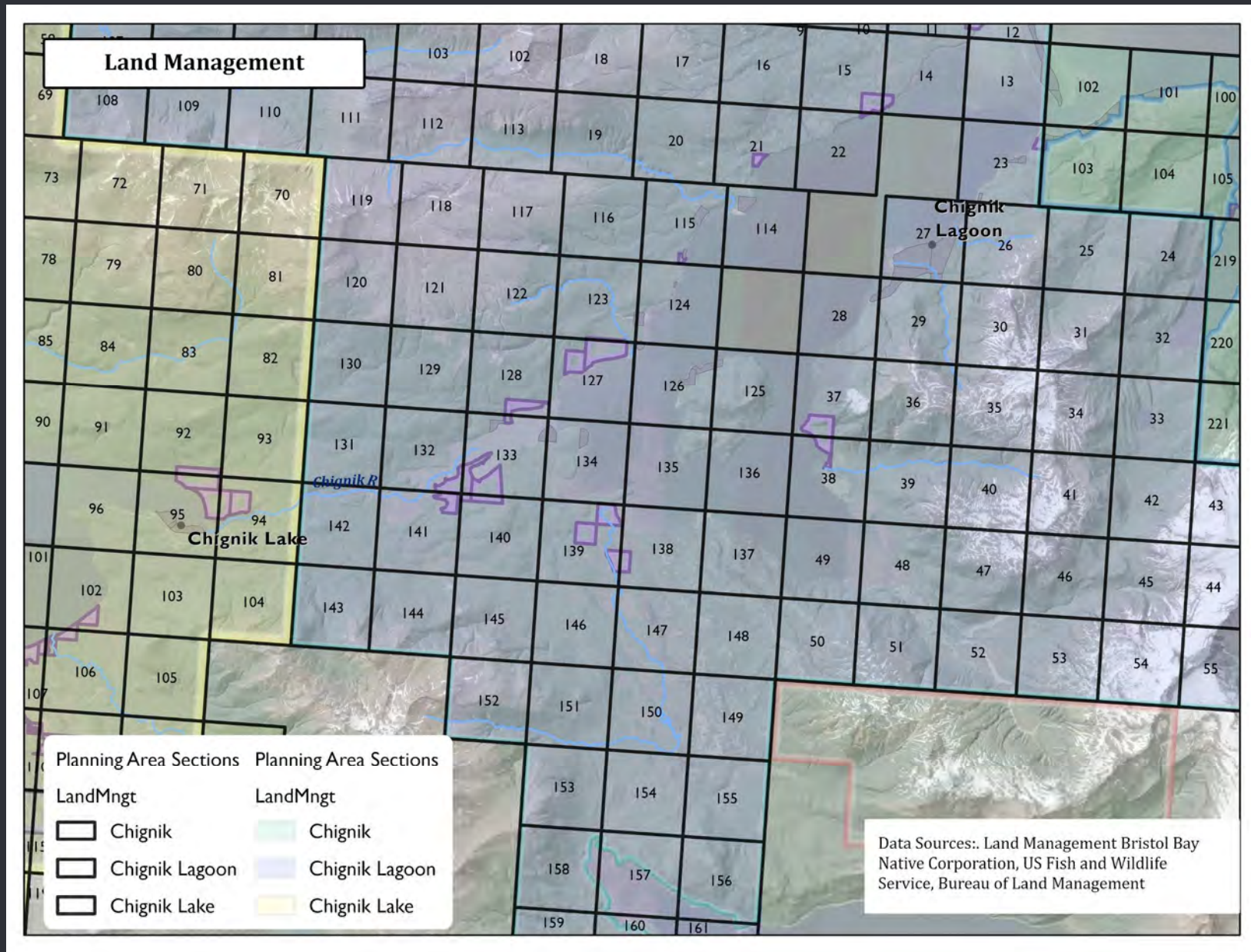
Intermission



Conservation Planning Atlas



Conservation Planning Atlas Map Index



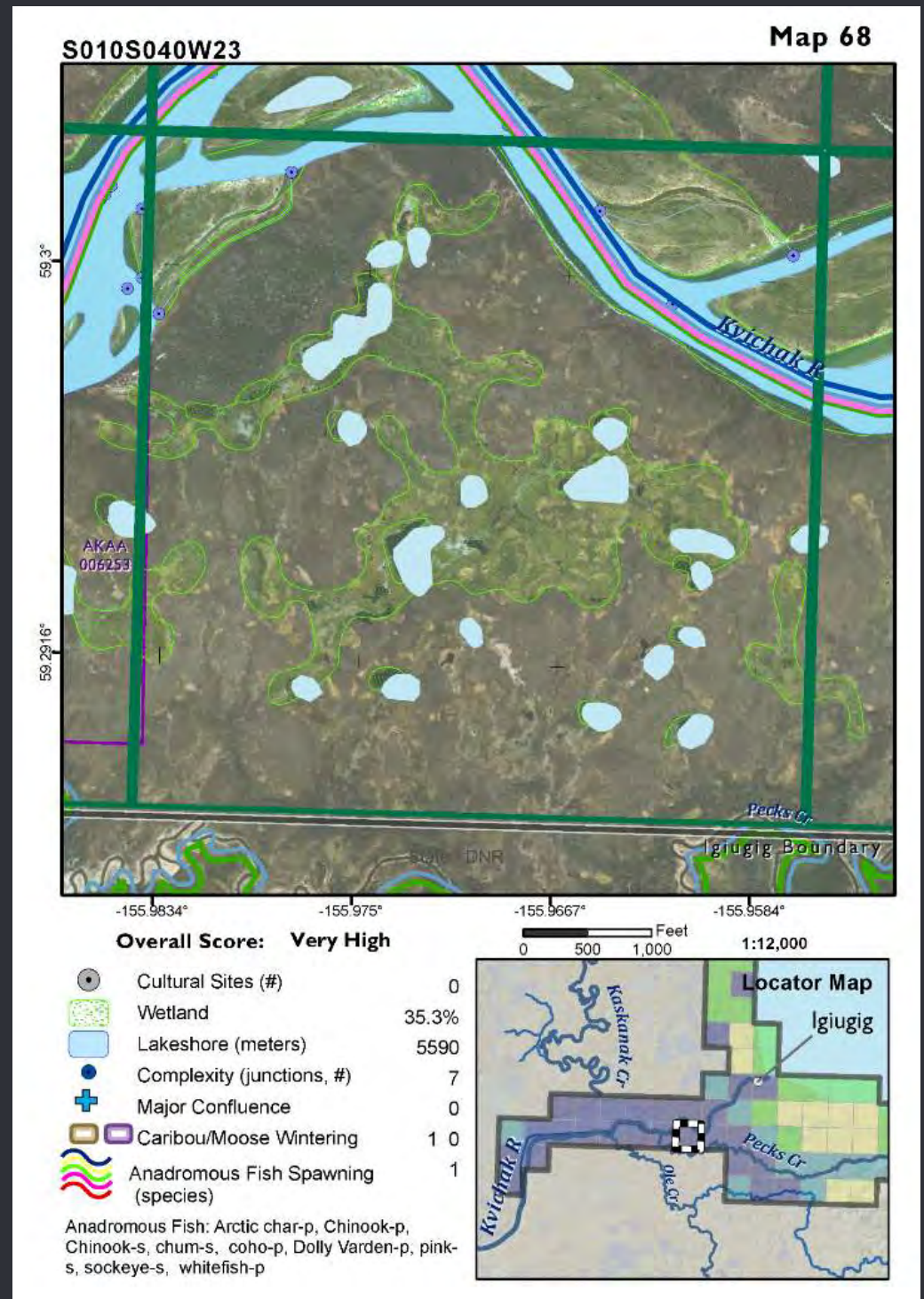
Map Page (sample)

Final Products

Imagery Background

Data Summary for each
Section

Locator Inset



Map Page (sample)

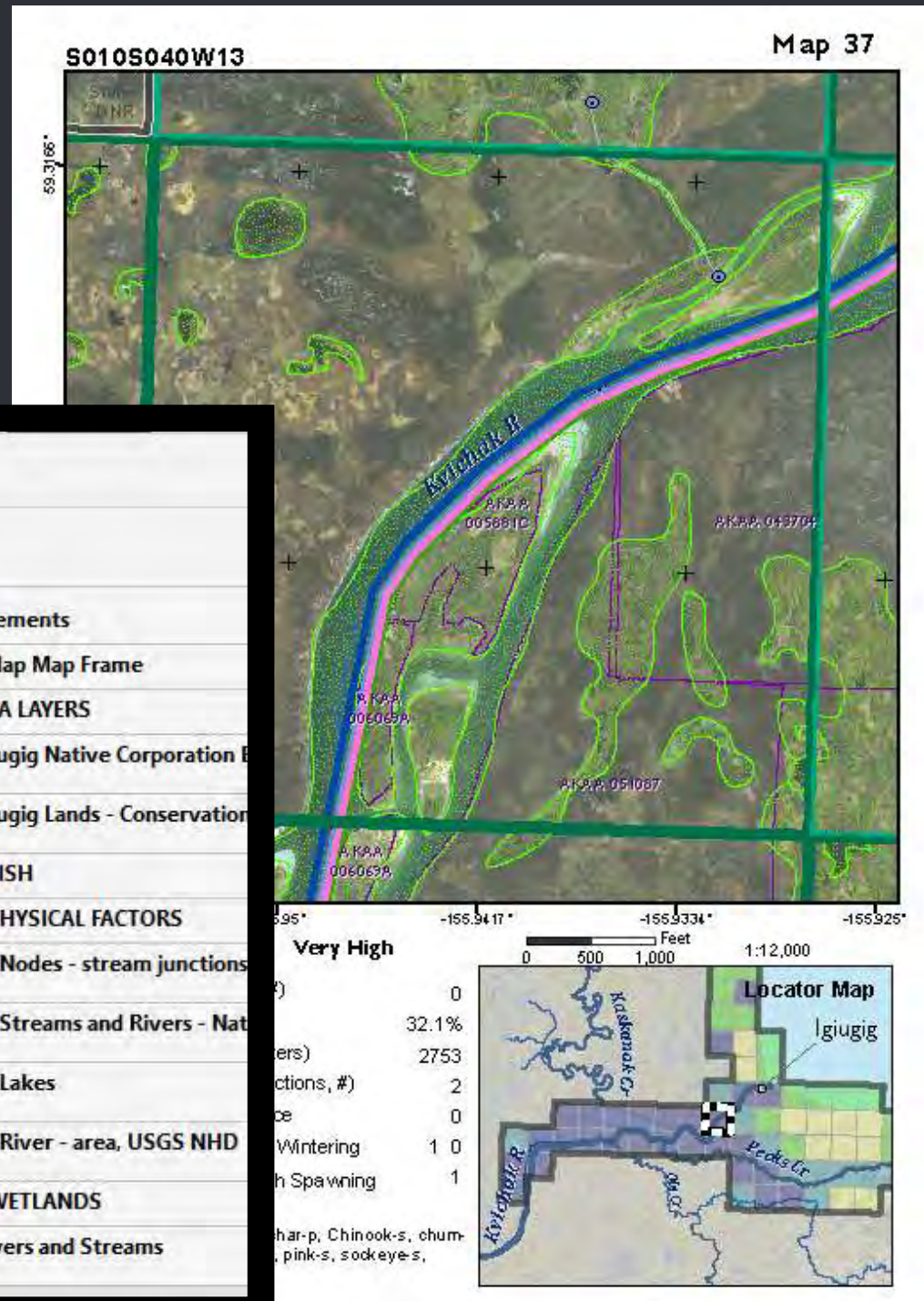
Final Products

Layered PDFs

Toggle Data
On/Off

Geo Informed
Lat/Lon

Measure Areas

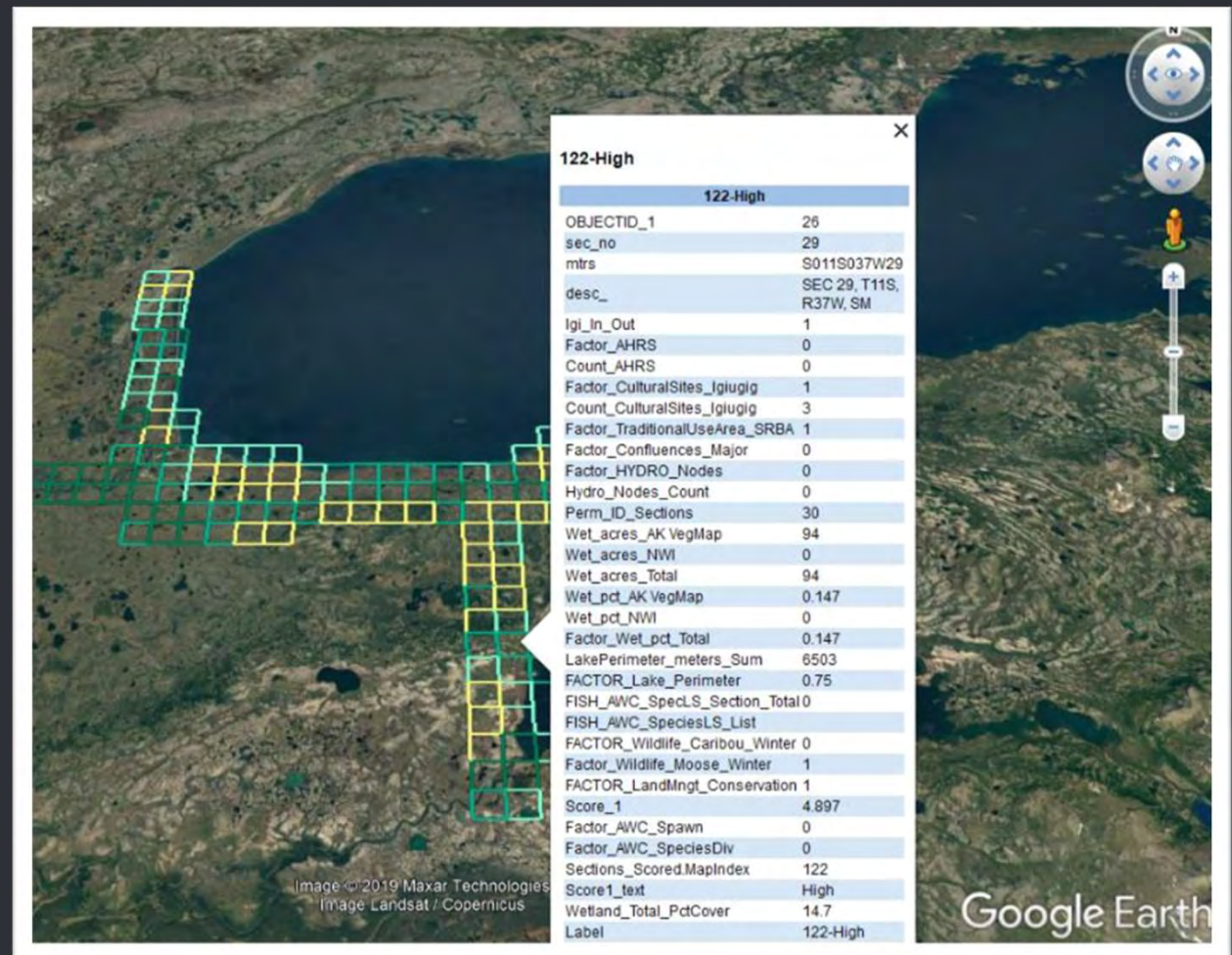


Conservation Planning Atlas

Final Products

GIS data

Google Earth files



Conservation Planning Atlas

Final Products

USB Drive

Index links to files

File Index (included digitally on this USB drive)

Igiugig Planning Report

Report describes project history, purpose, background, and methods. Report includes data descriptions, planning results, and a list of works cited.

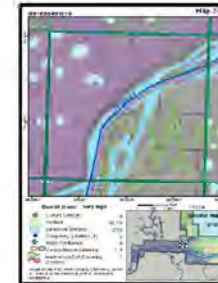


Igiugig Planning Atlas Section Maps

A set of 136 individual maps summarizing conservation values for each one square mile Section containing Igiugig Native Village lands. The section level maps are presented as layered pdf maps depict all conservation criteria.

Tiles Layered

These maps depict conservation scoring criteria on single mapsheets along with topographic, hillshaded elevation relief, and satellite imagery backgrounds. These files can be printed, or used as layered pdfs. The map user can turn layers on and off to isolate particular datasets of interest in Adobe Reader (see "Layered PDF instructions" document)



Igiugig Overview Map 11 x 17

An 11 inch by 17 inch overview map of Igiugig lands with Map Page Index and Conservation Scoring



Conservation Planning Atlas

Final Products

USB Drive

Index links to files

Data (D:) > projects > fish > BBHLT > Igiugig > FINAL

Name



data



documents



maps



Igiugig_File_Index-Linked



Igiugig_File_Index-Linked

Scored Land Sections Datasets

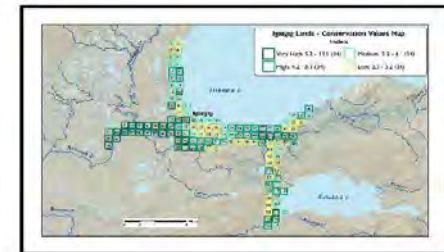
MS- Excel

Tabular summary of 136 land sections with conservation values data in Microsoft - Excel format

OBJECTID_sec_no	mtrs	desc	Igi_In_Our	Factor_AH	Count_AH	Factor_Cu
1	36	50105037N SEC 36, T10	1	0	0	0
2	1	50105037N SEC 1, T10	1	0	0	0
3	2	50105037N SEC 2, T10	1	0	0	0
4	9	50105037N SEC 9, T10	1	0	0	0
5	10	50105037N SEC 10, T10	1	0	0	0
6	11	50105037N SEC 11, T10	1	0	0	0
7	15	50105037N SEC 15, T10	1	0	0	0
8	16	50105037N SEC 16, T10	1	0	0	0
9	17	50105037N SEC 17, T10	1	0	0	0
10	18	50105037N SEC 18, T10	1	0	0	0
11	19	50105037N SEC 19, T10	1	0	0	0
12	20	50105037N SEC 20, T10	1	0	0	0
13	21	50105037N SEC 21, T10	1	0	0	0

ArcGIS

Geospatial dataset of 136 land sections with



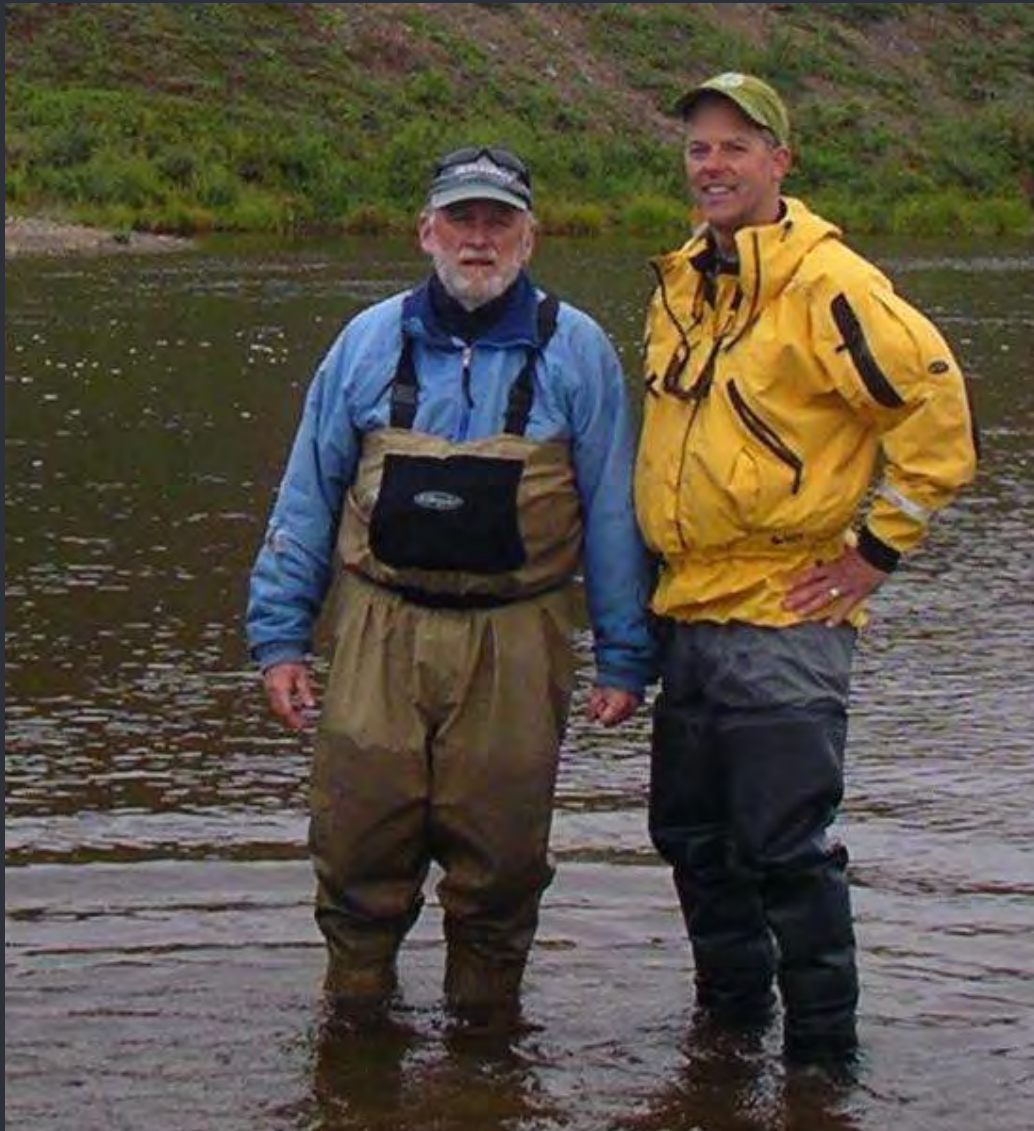
Questions



Thank You

Jeanette Carlson, Chignik

Mischa Ellana – Bristol Bay Native Corporation
Data



Tim Troll
Bristol Bay Heritage Land Trust

Marcus Geist
Artesian Knowledge
Marcus.geist@gmail.com



Artesian Knowledge 
bringing Data to the Surface