



Alaska Coastal Cooperative



2024 Chignik Regional Resilience Symposium

6/8/2024

Presented by Chris Maio, George Anderson, Matthew Balazs, Mike Willis, and Casey Ferguson



Alaska Coastal
Cooperative



AC³TION Project

Alaska Coastal Cooperative for Coproducing
Transformative Ideas and Opportunities in the North

*A community-first approach to
climate resilience*

ACC 3-Fold Mission

1. **Enhance communication** to identify and act on shared goals
2. **Advance applied science** that addresses local priorities and delivers actionable products
3. Contribute towards **building technical capacity** through education and training

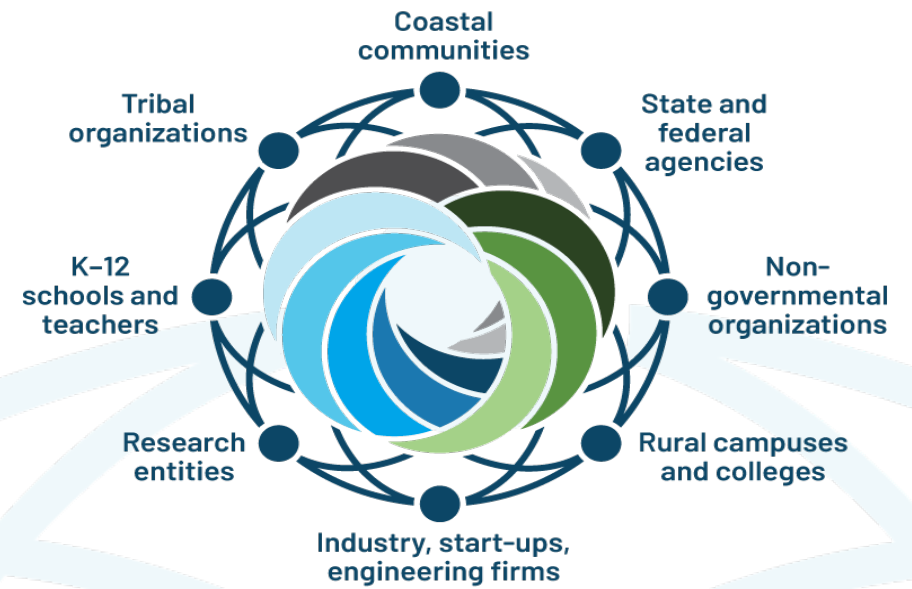


Photo by Susan Flensburg



Alaska Coastal Cooperative

alaskacoastal.org

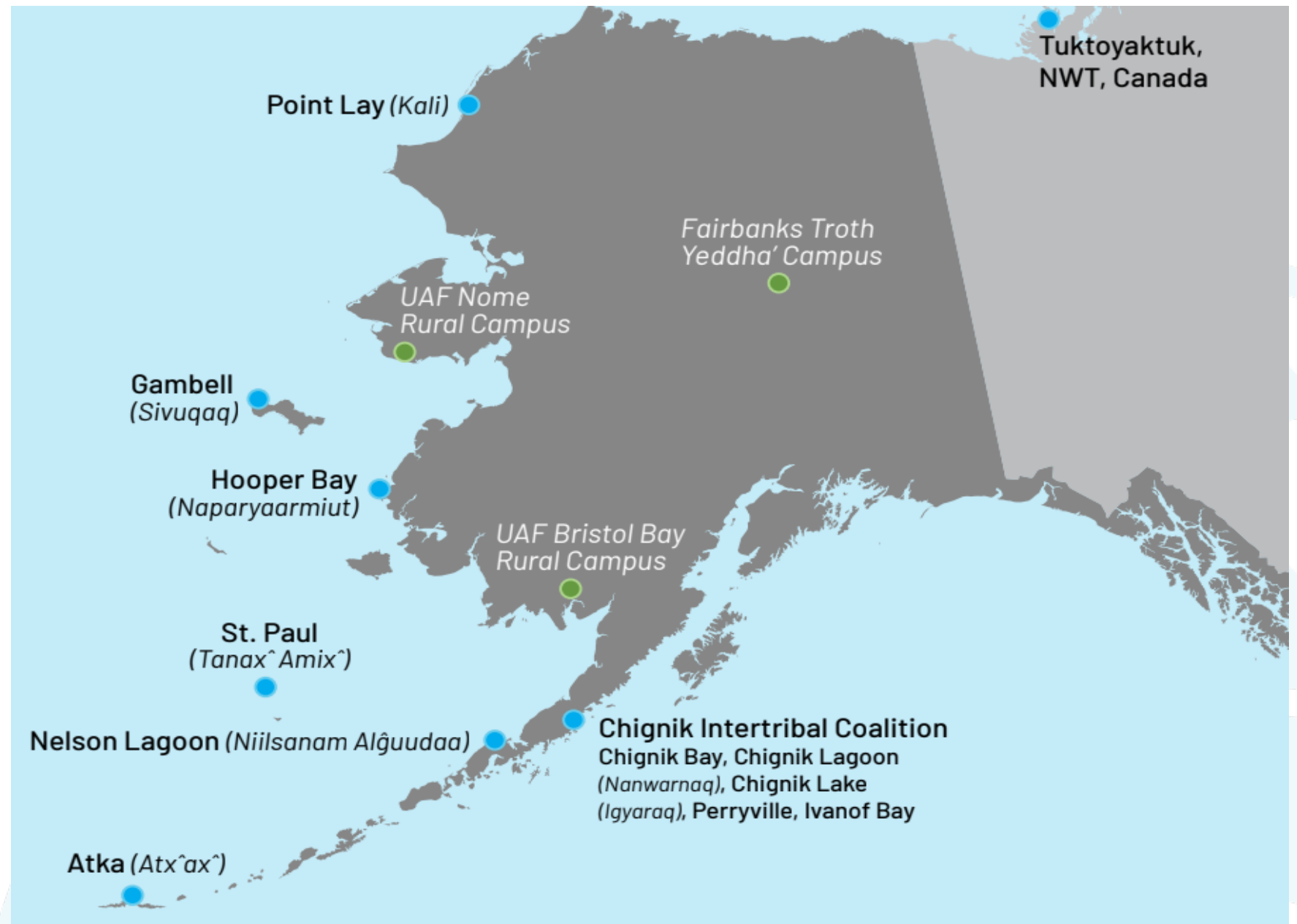


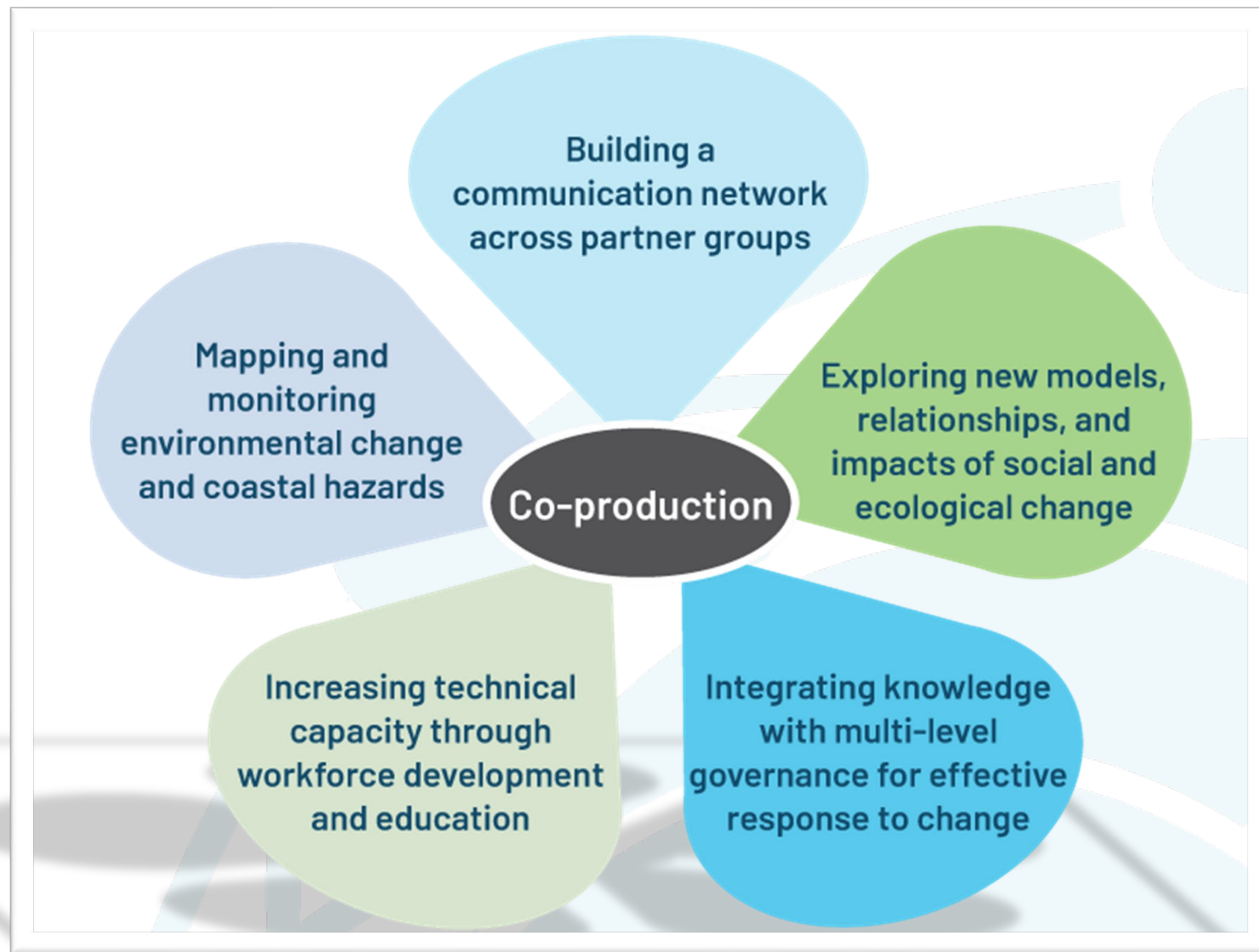
PAUL G. ALLEN
FAMILY FOUNDATION

UNIVERSITY OF
ALASKA
FAIRBANKS

ACTION

- NSF Funded 4-Year project - \$14 million total
- 12 community partners
- Community Research Lead Network
- Contribute towards understanding coastal hazards and their impacts on communities





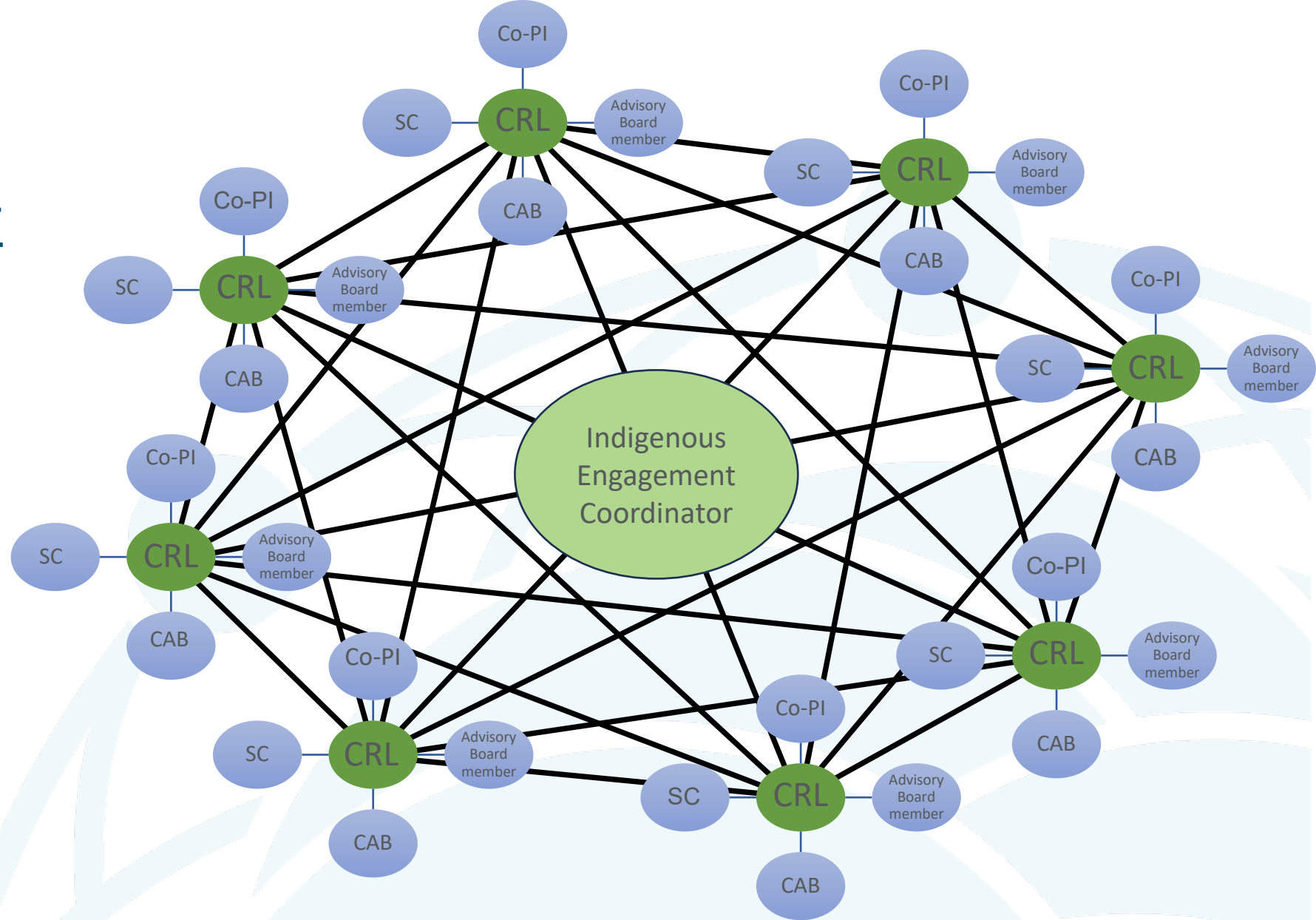
Community Research Lead (CRL) Network

- Subawards to communities funds a part-time CRL position
- Network led by Indigenous Engagement Coordinator
- Supported by a Community Advisory Board (CAB) made up of 2-3 local representatives
- CRL have opportunities for workforce development courses, research cruise, and other project activities
- Researchers learn from and work with CRLs and CABs to co-create research and workforce development activities



Community Research Lead (CRL) Network

- Community Research Lead in each Tribe
- Liaison to majority of ACTION team
- Co-Production of Knowledge - Traditional Knowledge, Field season



Alaska Coastal Cooperative

alaskacoastal.org



PAUL G. ALLEN
FAMILY FOUNDATION

UNIVERSITY OF
ALASKA
FAIRBANKS



Alaska Coastal
Cooperative



**Chignik Bay
Tribal Council**

**PAUL G. ALLEN
FAMILY FOUNDATION**



Chignik Bay Family Day Camp



July 27+28 • 10am–2pm
Chignik Community Hall

Children under 12 must be
accompanied by an adult.



Free for all!
Lunch included!

**Learn about coastal science,
Indigenous knowledge, and
the place we live through fun
indoor and outdoor activities.**

Share, create, and enjoy!

See you there!



Alaska Coastal Cooperative

alaskacoastal.org



**PAUL G. ALLEN
FAMILY FOUNDATION**

UAF UNIVERSITY OF
ALASKA
FAIRBANKS

Convergence Research Cruise

Bringing it all together on one ship

enhance communication – applied research – training and education

- 2-week cruise aboard *R/V Sikuliaq*
- Local and Indigenous knowledge holders, western scientists, and educators
- Visits to partner communities
- Will deploy of ocean moorings and wave buoys, multibeam surveys, and coastal hazard mapping



Kala McDonald and Piama Oleyer



Photos by Sarah Betcher – Farthest North Films

The Visioning Process

Identifying community risks and priorities – matchmaking with researcher expertise

Learning
about local
priorities



Alaska Coastal Cooperative

alaskacoastal.org



PAUL G. ALLEN
FAMILY FOUNDATION

UAF UNIVERSITY OF
ALASKA
FAIRBANKS

Research Menu: Physical Sciences



Build a communication network across partner groups



Explore new models, relationships, and impacts of change



Blend knowledge with multi-level governance for effective response to change



Build technical capacity through education and workforce development



Map and monitor environmental change and coastal hazard

Hazard Analysis

Landscape and Environmental Change

Natural Resource and Subsistence Studies

And...



Alaska Coastal Cooperative

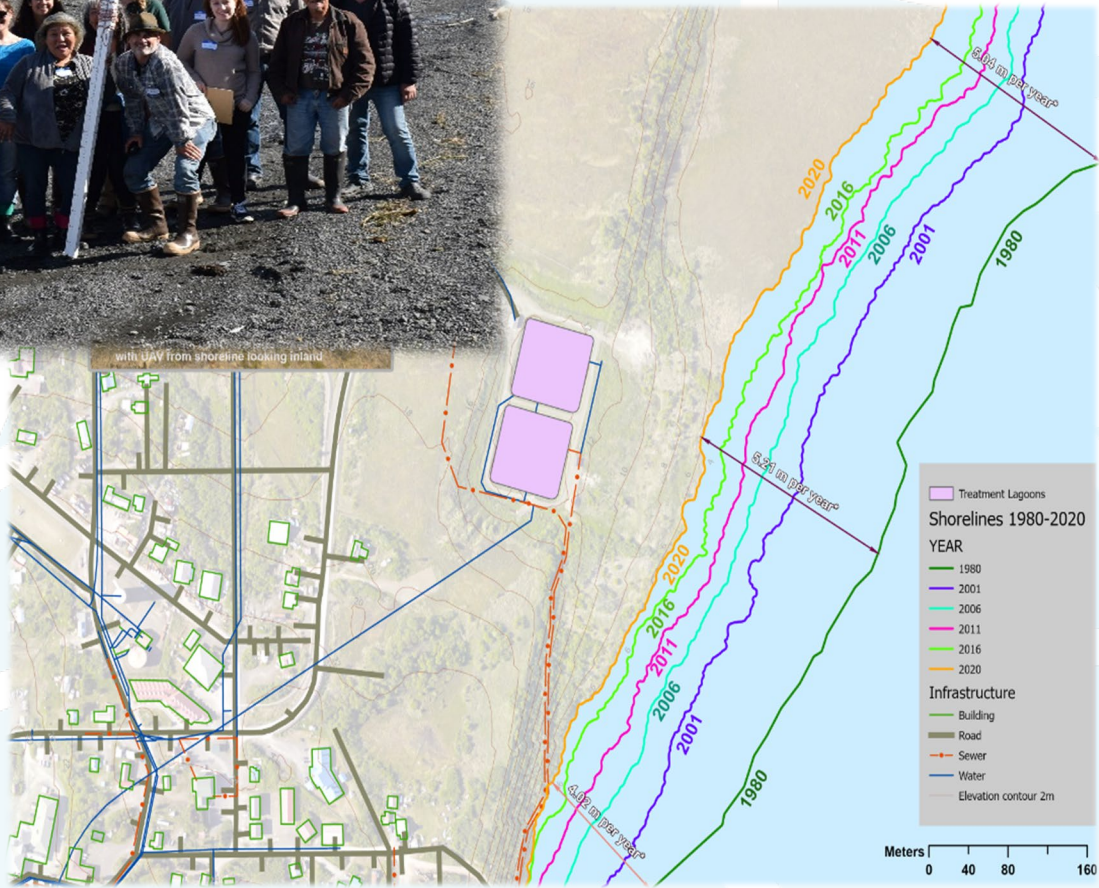
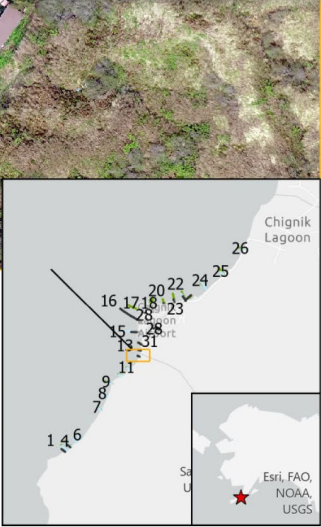
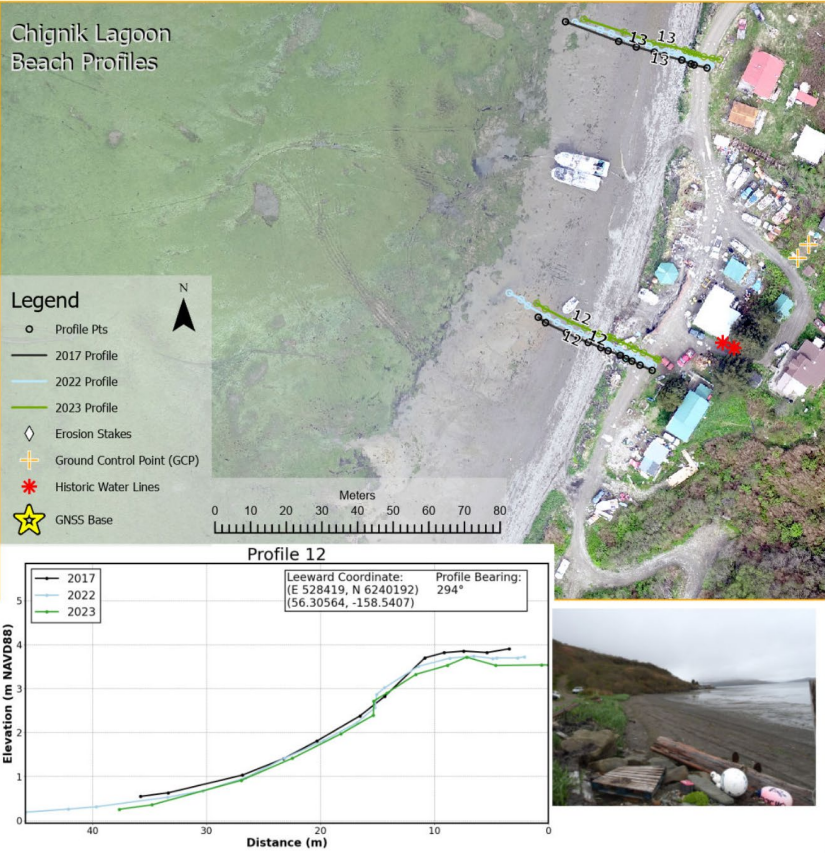
alaskacoastal.org



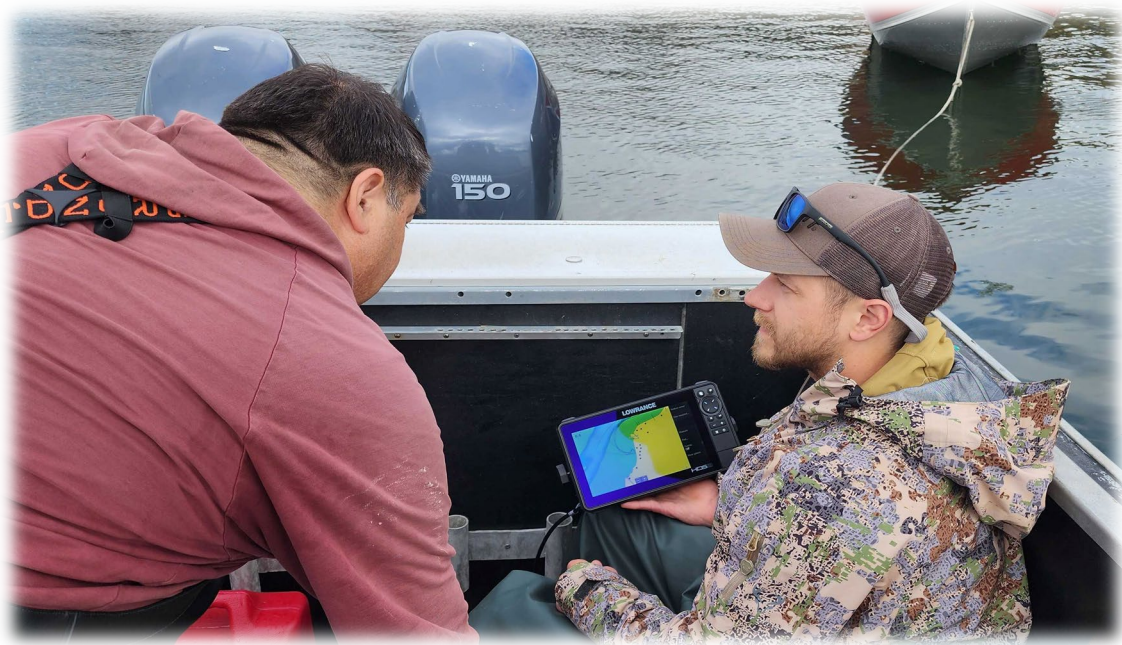
PAUL G. ALLEN
FAMILY FOUNDATION

UNIVERSITY OF
ALASKA
FAIRBANKS

Coastal Erosion



Nearshore Water Level and Bathymetry



Community-led Research to Address Local Needs



Alaska Coastal Cooperative

alaskacoastal.org

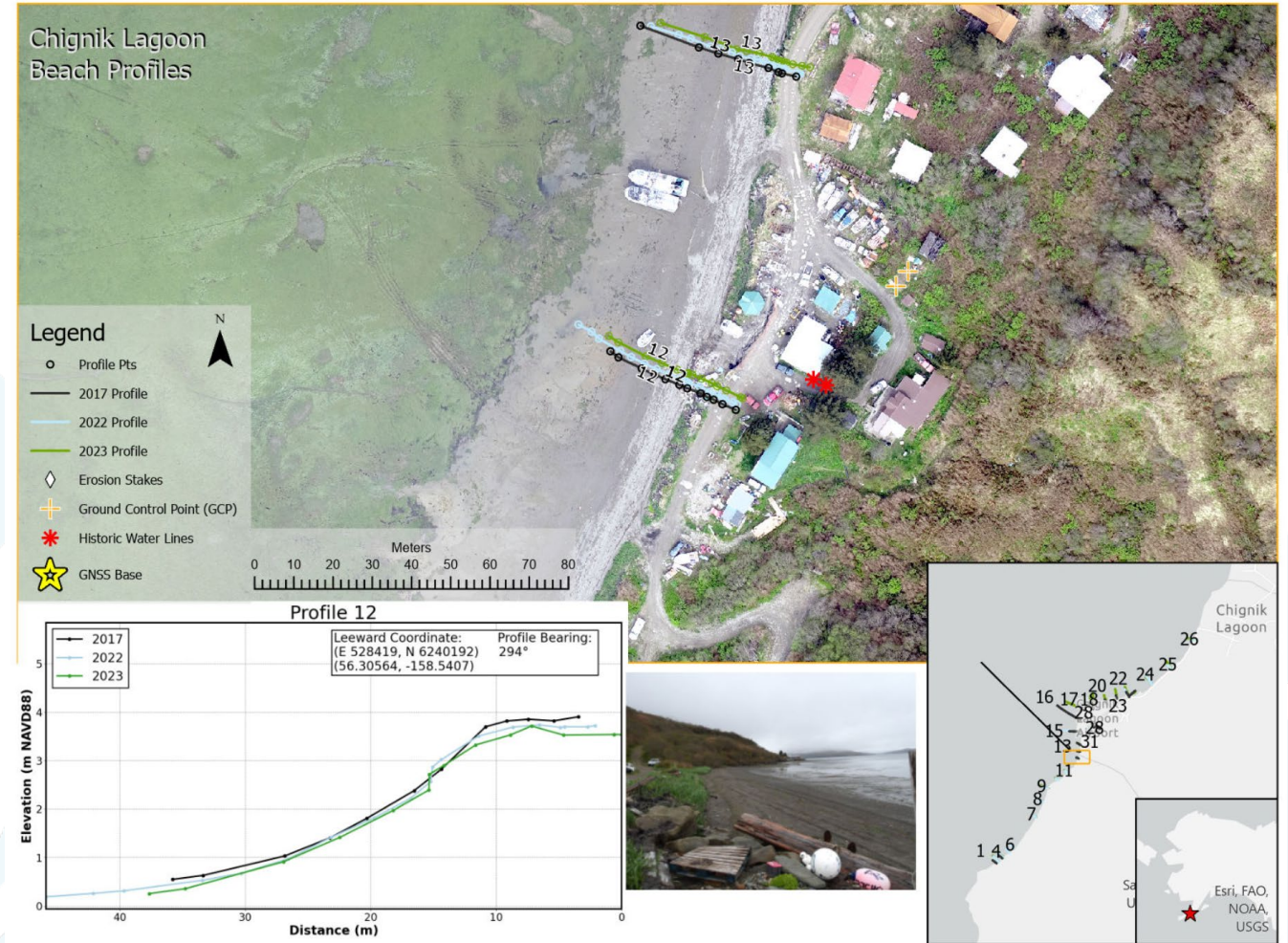
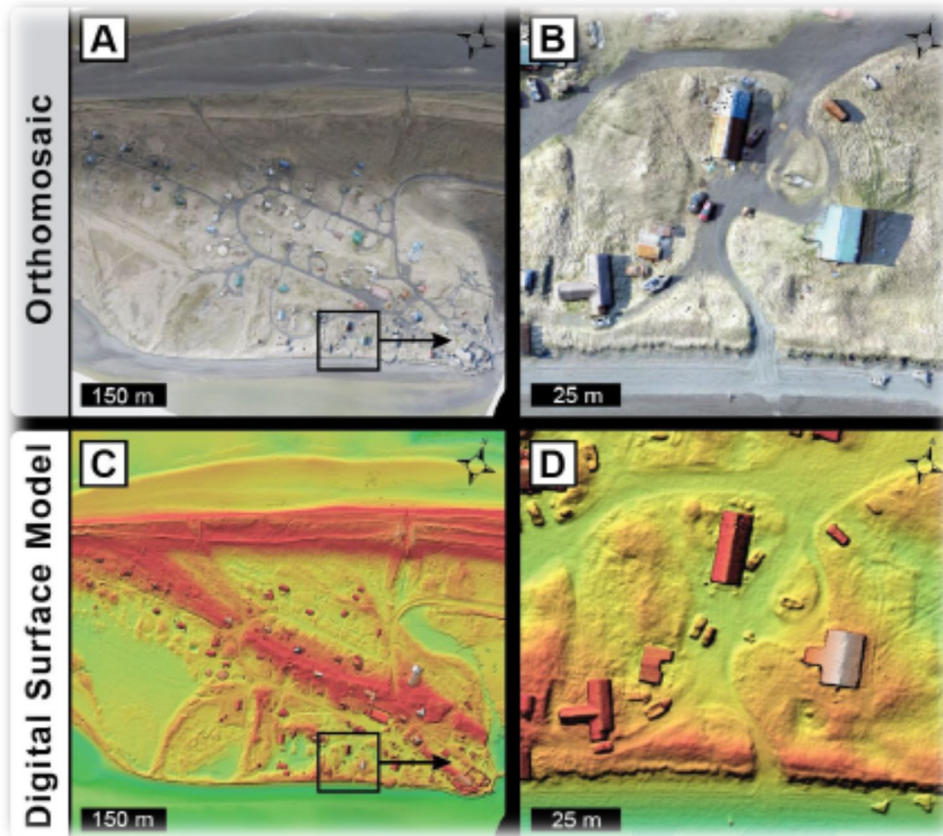


PAUL G. ALLEN
FAMILY FOUNDATION

UNIVERSITY OF
ALASKA
FAIRBANKS

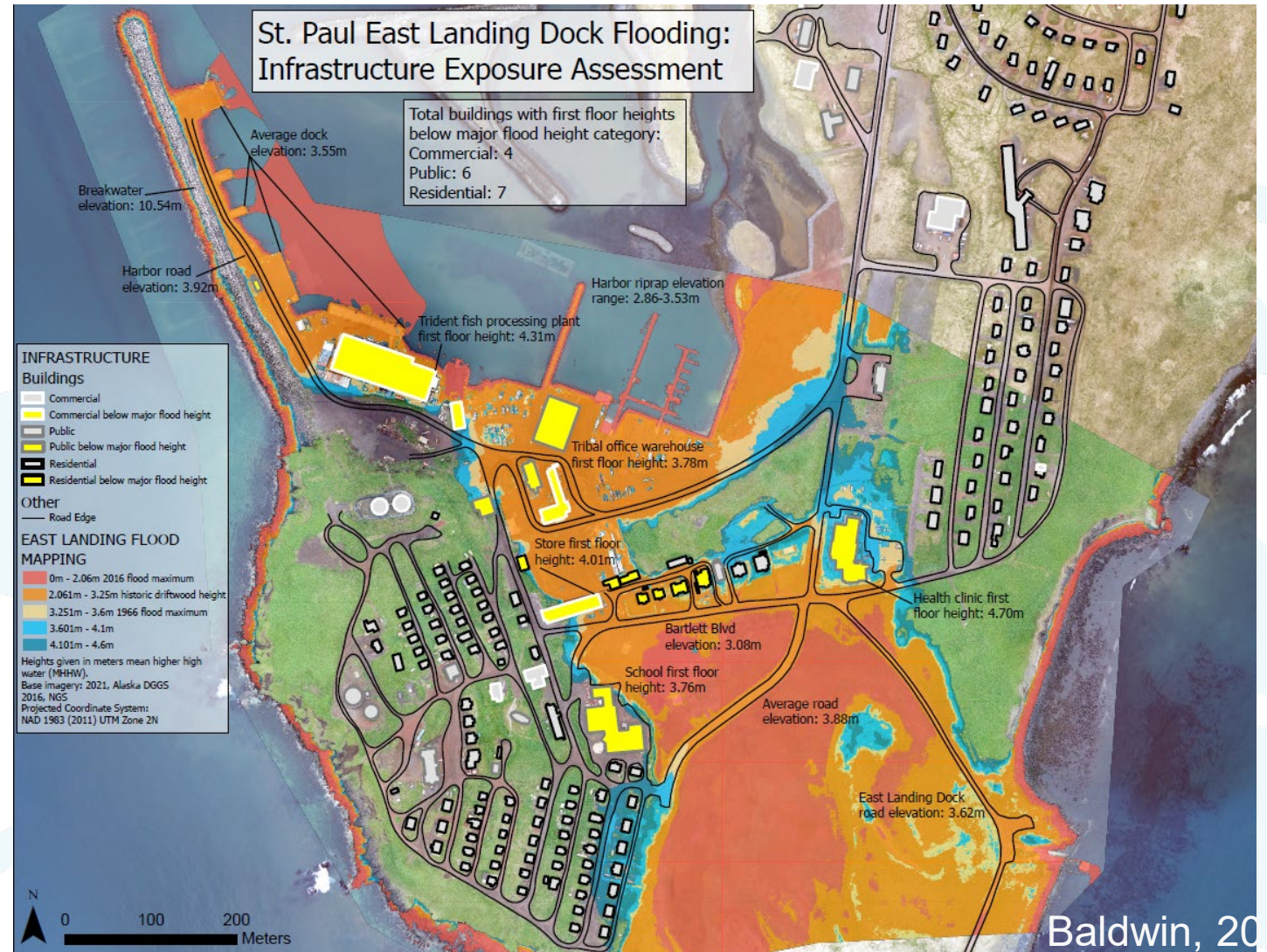
Mapping

- Community Planning
- Trail networks
- Tourist Maps
- GPS Surveys

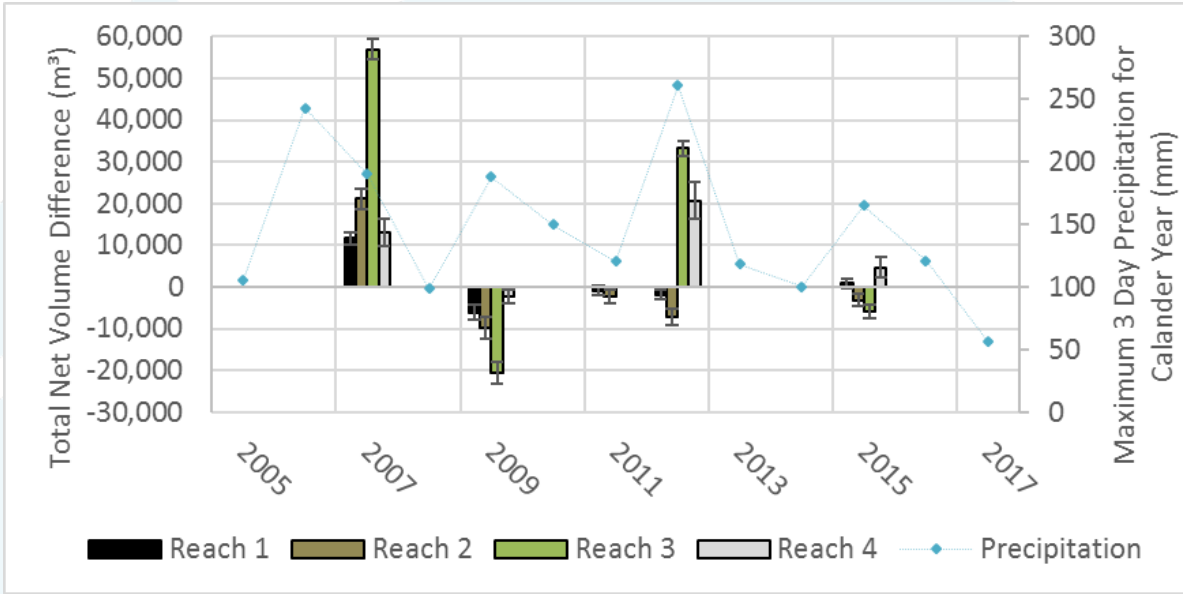
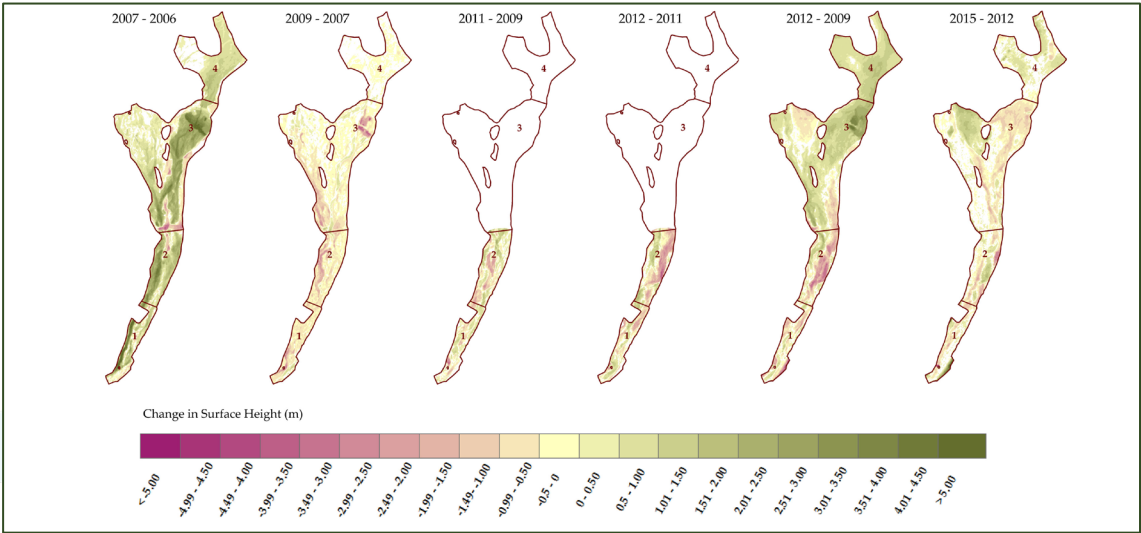
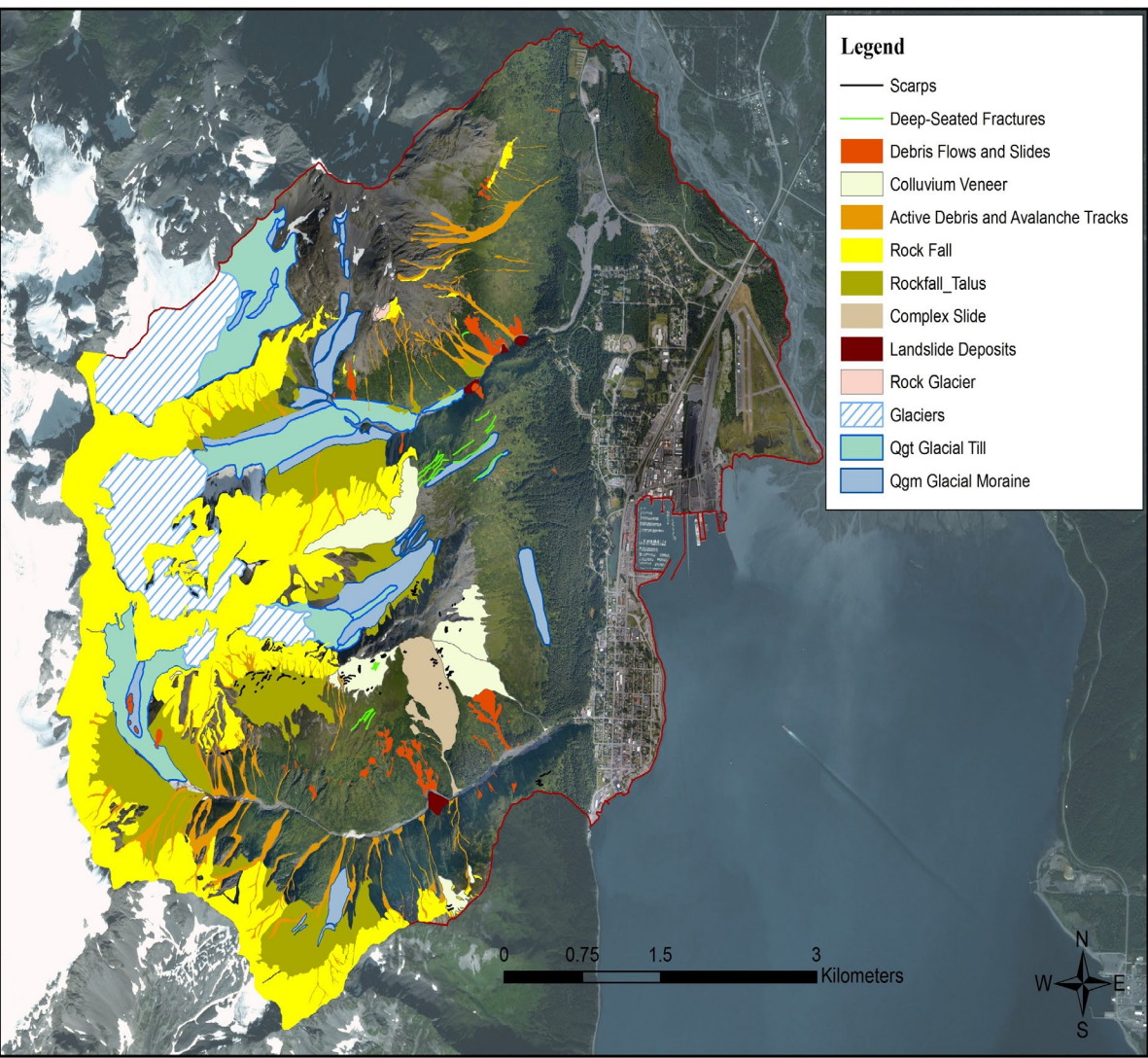


Flood Hazard Modeling and Mapping

- Preliminary models and maps exist in some areas
- USGS and Detares will expand upon this work as a part of this award
- Moorings and Water level instruments



Landslides and Sediment Studies



Snapshot of Social Science Research Menu

- Economic development
- Governance Structures and Policy
- Cultural and Heritage Studies
- Tourism
- Food Security
- Community Planning





Space for Collaborations and Leveraging Outside Expertise



alaskacoastal.org



Bottom Line: The goal of the project is to work together to address the community's goals.

- So, what should we work on together?

